



ALAMO
COLLEGES

ST. PHILIP'S COLLEGE

2009-2010 FACT BOOK



Institutional Planning, Research & Effectiveness
1801 Martin Luther King Drive., San Antonio, TX 78203

210-486-2369

<http://www.accd.edu/spc/admin/iprdept/default.aspx>

Preface.....	v
COLLEGE PROFILE	
<hr/>	
History.....	2
Mission Statement	3
Degree and Certificate Programs	
Associate of Applied Science Degrees	4
Associate of Health Sciences Degrees	5
Associate of Arts Degrees.....	5
Certificate of Completion	6
Advanced Technical Certificates	7
Marketable Skills Achievement Certificates.....	7
Enhanced Skills Certificates.....	7
Technical Certificate of Completion	7
High School Transition Programs.....	8
First Year Experience College	9
Transfer Programs	10
Accreditation & Affiliations	12
Organizational Charts	
St. Philip's College.....	13
Academic Affairs	14
Student Success	15
College Services	16
Divisions	
Arts & Sciences	17
Applied Science & Technology.....	18
Health Science	18
Institutional Resources	
Center for Learning Resources.....	20
Instructional Technologies	21
Instructional Innovation Center	21
Continuing Education & Extended Services	22
S.W. Campus.....	23
Physical Facilities	
Acreage/Square Footage.....	24
MLK Campus Map & Building Description	25
S.W. Campus Map & Building Description	26

ENROLLMENT TRENDS

Credit Programs

Fall Semesters 1999 – 2008	28
Spring Semesters 2000 – 2009.....	28
Summer Session I 2000 – 2009.....	29
Summer Session II 2000 – 2009	29
By Classification (Percentage).....	30
Gender	31
Ethnicity.....	31
Age.....	32
Part-Time vs. Full Time	34
Day vs. Evening	34
Divisions	35
Contact Hours	36
Distance Learning	37
Developmental Education.....	37
Continuing Education – Contact Hours	38
Continuing Education – Unduplicated Enrollment	39

STUDENT PROFILE

General Information

Gender, Ethnicity, Age, Major, Hours Enrolled, Day vs. Evening	41
Top Ten	
Arts & Science Majors	42
Applied Science & Technology Majors	42
Health Sciences Majors	43
Counties of Residence	43
States of Residence.....	44
Feeder High Schools	44
Feeder Zip Codes of Residence	45
Student Objective in Attending St. Philip's College	46
Intended Duration of Enrollment	47
Academic Experience on Entry	48
Student Employment Status.....	49
Financial Aid Awards	50
Registration.....	51

Academic Achievement

Graduation Degrees & Certificates Awarded.....	52
Graduates by Ethnicity	52
Degree & Certificate Trends.....	53
Grade Distribution Trends	54
Fall to Fall Retention by Ethnicity	55
Retention of First-Time, Full-Time Degree-Seeking Freshmen by Ethnicity	56
Retention by Department and Self-Declared Major	57
PERSONNEL PROFILE	
<hr/>	
Employee Profile	
Full Time Employment by Gender & Classification.....	65
Full Time Employment by Ethnicity & Classification.....	65
Faculty Profile	
Gender, Ethnicity, Faculty Rank, Highest Degree Earned.....	66
By Division	67
By Department	67
FINANCIAL PROFILE	
<hr/>	
Tuition and Fees	69
Budget, FY 2008-2009	71

PREFACE

The St. Philip's College 2009-2010 Fact Book is a compilation of statistical and descriptive information concerning St. Philip's College, its programs, enrollments, students, personnel and financials.

The document is designed to provide College administrators, faculty, the community and the Board of Trustees with accurate and consistent information about the college. 'Enrollment Trends' spans five to ten years. Other sections, such as 'Student Profiles', contain snapshot data of a particular population in a particular semester. Descriptive data is found in 'College Profile' and concerns programs and organizational structure.

Administrators, faculty and staff members will find this a good reference document for planning, preparing reports, and writing grant proposals.

Whenever possible, data contained herein comes from 'static' databases, i.e., from the standard reports submitted to the Texas Higher Education Coordinating Board (THECB), referred to as 'twelfth-class-day reported data'. This provides consistency over time and coincides closely with college data stored at the THECB for reimbursement purposes. Other data comes from 'live' databases in which periodic updating may take place and may change slightly depending upon the date the report was run. In all cases, the data source is shown under each table or chart.

As you use this document, you are encouraged to offer suggestions for improvement of future issues.

Mecca Salahuddin
Director
Institutional Planning, Research and Effectiveness

Contributors:

Compilation and Design:
Elizabeth Ehrler
Research Specialist

Data Resource:
Mecca Salahuddin
Director of Institutional Research
& Effectiveness

Data Resource:
Rhonda Johnson
Statistical Research Specialist

St. Philip's College
1801 Martin Luther King Dr.
San Antonio, TX 78203-2098
(210) 486-2369

Planning, Research & Effectiveness Department

<http://www.accd.edu/spc/admin/jprdept/default.aspx>

COLLEGE PROFILE

History 2

Mission Statement 3

Degree and Certificate Programs

 Associate of Applied Science Degrees 4

 Associate of Health Sciences Degrees 5

 Associate of Arts Degrees..... 5

 Certificate of Completion 6

 Advanced Technical Certificates 7

 Marketable Skills Achievement Certificates..... 7

 Enhanced Skills Certificates..... 7

 Technical Certificate of Completion 7

 High School Transition Programs..... 8

 First Year Experience College 9

 Transfer Programs 10

Accreditation & Affiliations 12

Organizational Charts

 St. Philip's College 13

 Academic Affairs 14

 Student Success 15

 College Services 16

Divisions

 Arts & Sciences 17

 Applied Science & Technology..... 18

 Health Science 18

Institutional Resources

 Center for Learning Resources..... 20

 Instructional Technologies 21

 Instructional Innovation Center 21

 Continuing Education & Extended Services 22

 S.W. Campus..... 23

Physical Facilities

 Acreage/Square Footage..... 24

 MLK Campus Map & Building Description 25



**A L A M O
C O L L E G E S**

ST. PHILIP'S COLLEGE

Historical Sketch

Bishop James Steptoe Johnston, the son of a former slave owner and a member of the St. Philip's Episcopal Church of the West Texas Diocese, founded St. Philip's College in 1898. The 112-year-old school, which opened on March 1, 1898, began as a sewing class for black girls with fewer than 20 students in a house located in the area known today as the La Villita Historical Arts Village in downtown San Antonio.

Artemisia Bowden, a teacher and daughter of a former slave, later assumed leadership of the school. Under the direction of Miss Bowden, over the ensuing 52 years, St. Philip's underwent monumental transformation, evolving from parochial day school to industrial school to a fully accredited two-year college offering a diverse curriculum. Changes included a move in 1917 from the school's original site to a new location just east of downtown, and an affiliation with San Antonio College and the San Antonio Independent School District in 1942 that marked the end of the college's era as a private institution.

Today, St. Philip's College is a comprehensive multi-campus institution of the Alamo Colleges, joining four other colleges – San Antonio College, Palo Alto College, Northwest Vista College and Northeast Lakeview College – in meeting the educational needs of San Antonio's growing and diverse community.



A nationally unique institution, St. Philip's College has the distinct designation as a Historically Black College and Hispanic Serving Institution and is the only college in the nation with this federal designation.

With an enrollment of over 10,000 credit students and 6,000 non-credit students, St. Philip's is among the oldest and most diverse community colleges in the nation, and one of the fastest growing in Texas.

Dr. Adena Williams Loston serves as the 14th President of St. Philip's College. She assumed the reins on March 1, 2007, on the occasion of St. Philip's 109th anniversary.

For more information about St. Philip's College, visit www.alamo.edu/spc.

MISSION STATEMENT

St. Philip's College, founded in 1898, and is a comprehensive, public community college whose mission is to provide a quality educational environment which stimulates leadership, personal growth and a lifelong appreciation for learning.

As a Historically Black College and a Hispanic Serving Institution, St. Philip's College strives to be an important force in the community, responsive to the needs of a population rich in its ethnic, cultural, and socio-economic diversity. St. Philip's College seeks to create an environment fostering excellence in academic and technical achievement while expanding its commitment to opportunity and access.

The College takes pride in its individual attention to students in a flexible and sensitive environment. As a dynamic and innovative institution, St. Philip's College values the role of creative and critical thought in preparing its students, campus and community to meet the challenges of a rapidly changing world.

The College fulfills its mission by providing:

- ∂ General education courses in arts and sciences.
- ∂ Transfer education for students desiring to attend a senior institution.
- ∂ Developmental courses that improve the basic skills of students whose academic foundations need strengthening.
- ∂ Applied science and technical programs designed to prepare students for employment or for the updating of skills.
- ∂ Special occupational training and upgrading programs for business, industry and government.
- ∂ Continuing education programs for occupational or cultural enrichment.
- ∂ Counseling and guidance designed to assist students in achieving their educational and professional goals.
- ∂ Educational support services that include library services, tutoring, open-use computer labs, and a writing center.
- ∂ Services and appropriate accommodations for special needs individuals.
- ∂ Quality social, cultural and intellectual enrichment experiences for the community.
- ∂ Opportunities for participation in community research and economic development.

Approved and Adopted November 1994

St. Philip's College is a community college operating under an open door policy. The desire is to serve each student's educational needs while maintaining a high standard of excellence in all programs.

DEGREE AND CERTIFICATE PROGRAMS

Associate of Applied Science Degrees

1. Accounting Technician
2. Accreditation Leadership
3. Administrative Office Technology
4. Air Conditioning and Heating
5. Aircraft Technician Airframe
6. Aircraft Technician Power plant
7. Automotive Technology
8. Baking and Pastry Arts
9. Biomedical Equipment Technology
10. Business Management and Technology
11. CNC Manufacturing Technician
12. Collision/Refinishing Technician
13. Computer Aided Drafting (Architectural)
14. Computer Maintenance Technology
15. Computer Maintenance Technology
with Network Specialization
16. Construction Business Management
17. Culinary Arts
18. Desktop Support Specialist
19. Diagnostic Medical Sonography
20. Diesel Construction Equipment
Technician
21. Diesel/Light to Heavy Truck Technology
22. Early Childhood Studies
23. Electrical Trades
24. General Motors Automotive Service
Educational Program (ASEP)
25. Health Information Technology
26. Home Building Technology
27. Hospitality Event Management
28. Hotel Management
29. Industrial Maintenance Management
30. Invasive Cardiovascular Technology
31. Language and Literacy in Preschool
32. LVN to ADN Mobility Program
33. Medical Laboratory Technician
34. Network Administrator
35. Network Security Administrator
36. Occupational Therapy Assistant
37. Physical Therapist Assistant
38. Power Generation and Alternative
Energy
39. Precision Metal Workers:
Manufacturing Operations Technician
40. Radiography Technologist
41. Refrigeration Technology
42. Respiratory Care Technology
43. Restaurant Management
44. Web Developer
45. Welder/Welding Technologist

Associate of Health Science Degrees

1. Biology
2. Chemistry
3. Earth Sciences and Natural Energy Resources
4. Environmental Science
5. General Science
6. Health Professions Degree
7. Physics
8. Pre-Dentistry
9. Pre-Medicine
10. Pre-Nursing
11. Pre-Optometry
12. Pre-Pharmacy

Associate of Arts Degrees

1. Business Administration
2. Ceramics and Sculpture
3. Comic Book Illustration
4. Computer Science
5. Criminal Justice
6. Design
7. Digital Media
8. Drawing and Painting
9. Kinesiology
10. Liberal Arts
11. Mathematics
12. Music
13. Philosophy
14. Theater Performance
15. Economics
16. English
17. Foreign Language (Spanish)
18. General Studies
19. Government
20. History
21. Pre-Engineering
22. Pre-Social Work
23. Psychology
24. Sociology
25. Speech
26. Stage Craft
27. Statistics
28. Teacher Education
29. Humanities

Certificates of Completion

1. Advanced Cisco System Networking
2. Air Conditioning and Heating
3. Aircraft Mechanic Airframe
4. Aircraft Mechanic Power Plant
5. Aircraft Structures Mechanic
6. Aircraft Turbine Mechanic
7. Architectural Drafting 3D Enhanced Skills
8. Automotive Technology Certificate
9. Avionics
10. Baking Principles
11. Brake and Front End Specialist
12. Building Trades
13. Child Development Associate National Credential (CDA)
14. Cisco Systems Networking
15. CNC Operator
16. Coding Specialist
17. Collision Technology
18. Comp. TIA Linux+ Certification Preparation
19. Computer Aided Drafting Technician
20. Computerized Accountant Technician
21. Culinary Studies
22. Data Driven Web Developer
23. Desktop Support Specialist
24. Diesel/Heavy Equipment Technology
25. Diesel/Light to Heavy Duty Truck Transmission Specialist
26. Diesel/Light to Heavy Truck Technology
27. Document Coding Specialist
28. Early Childhood Studies
29. Electrical Trades
30. Electronics Assistant
31. Entrepreneurship
32. Ford Maintenance and Light-Duty Repair
33. General Medical Transcripts
34. Health Information Specialist
35. Heating and Air Conditioning Specialist
36. Histological Technician
37. Home Building
38. Hotel Limited Service Property Management
39. Legal Word Processing Specialist
40. Machinist/Machine Technologist
41. Manual/Semi-Manual Inert Gas Welding GTAW/GMAW
42. Microsoft Office Specialist (MOS)
43. Network Professional
44. Network Professional: Server
45. Network Systems Technician
46. Office Assistant
47. Payroll Clerk
48. Performance Specialist
49. Plastics Certificate
50. Plumber's Helper
51. Plumbing Trades
52. Power Generation and Alternative Energy
53. Precision Metal Workers: CNC Tool Operator
54. Precision Metal Workers: Manufacturing Operations Maintenance Assistant
55. Precision Metal Workers : Operations Maintenance Mechanic
56. Precision Metal Workers: Manufacturing Skills trade Helper
57. Refinishing Technology
58. Refrigeration
59. Specialty Medical Transcripts
60. Structural/Pipe Layout
61. Surgical Technology
62. Transmission Specialist
63. Vocational Nursing
64. Web Designer: Level I
65. Web Developer

Advanced Technical Certificates

- Department of Allied Health
- Department of Radiography
- Long Term Nursing Home Administration
- Diagnostic Medical Sonography

Marketable Skills Achievement Awards

- Air Conditioning Systems – Installation MSAC
- Air Conditioning Systems – Service MSAC
- Beginning Accounting Technician
- Data Entry Specialist
- Diesel/Light to Heavy Truck Technology Mechanic Helper I MSAA
- Diesel/Light to Heavy Truck Technology: Mechanic Helper II MSAA
- Certified Medical Receptionist
- Power Generation and Alternative Energy MSAC
- Project Team Leader

Marketable Skills Certificates

- Architectural Drafting
- Database Specialist
- File Clerk
- Legal Receptionist
- Professional Secretary
- Receptionist
- Spreadsheets Specialist
- Word Processing Specialist
- Community Leadership MSAC
- CompTIA A+
- Business Communications Specialist
- Business Presentation Specialist
- Customer Service Specialist
- Retail Management MSAC

Enhanced Skills Certificates

- Computer Tomography
- Magnetic Resonance Imaging

Technical Certificates of Completion

- Administrative Office Assistant
- Diesel/Light to Heavy Truck Technology Brake and Front End Specialist
- Long Term Care Nursing Home Administrator

High School Transition Programs

The transition from high school to college is often a difficult process, and the type of preparation needed for this change varies among students. To meet these challenges, the College utilizes several approaches:

- * College Partnerships
- * The Dual Credit Program
- * Tech-Prep
- * First Year Experience Center

* **Dual Credit Program**

The Dual Credit Program enables eligible high school students to earn college credit while they are completing their high school requirements. St. Philip's College waives tuition for dual credit eligible high school students in articulated courses for which they receive joint high school and community college credit.

A successfully completed dual credit course earns the student college credit which may be applied toward an associate's degree, certificate of completion, and/or may transfer to other colleges or universities. Students should verify with the colleges they plan to attend after graduation that courses will apply toward the degrees sought and, if applicable, that courses will transfer.

* **Tech-Prep**

St. Philip's College has entered into approved Tech-Prep articulation agreements with several area high schools in the areas of Automotive Technology, Business Information Solutions, Hotel Management, Restaurant Management, Tourism, and Culinary Arts and Nursing. Agreements in additional Tech-Prep areas of study are forthcoming pending approval by the Texas Education Agency (TEA), and the Texas Higher Education Coordinating Board (THECB).

First Year Experience College

The First Year Experience Center offers special services and assistance first year students. The purpose of the program is to retain participating students beyond their critical first year of college where the majority of dropouts occur. Through extensive one-on-one student services and academic support, students are helped to adjust to college life and acquire the skills needed to become successful students.

The following is a list and a brief description of the programs available to student that enroll in the program:

Fresh X Summer Program

The Fresh X Summer Program is a 4 week Accuplacer refresher course to help incoming graduating seniors raise their Accuplacer scores in Math, Reading and English. This course also offers an orientation to college courses to help incoming students transition from high school to college.

Workshop Series

Workshops designed to give students the basic tools and foundations for college success via classroom activities, lectures, labs, discussions, and guest speakers.

Early Alert Program

St. Philip's College's Early Alert Program was designed to provide faculty members the opportunity to alert a student and College staff to the student's need for effective intervention. The earlier the intervention by a faculty member, the sooner the College staff can bring a broad array of support service to bear on the student's behalf. Early Alert can have a positive effect on the student's overall success, thus enhancing their retention and graduation.

Lap Top and Book Loan Program

The Equity Center Textbook Program has a limited number of textbooks available to loan to students for the duration of the semester. Books must be returned to the Equity Center by the end of the semester or a fine will be assessed, and a hold will be placed on the student's record (barring any registration activity).

The Lap top Loan Program also has a limited number of laptops available for loan on a semester basis. To be eligible a student must: be in their first year of college, hold at least a 2.5 cumulative GPA and be in academic good standing, have no holds on their record and be cleared by the Learning Resource Center and the First Year Experience Center.

Transfer Programs

Transfer Center

The Transfer Center provides students with current information on many colleges and universities. The Transfer Center Professional Staff are eager to assist students who are planning to continue their goals beyond the community college. The mission of the Transfer Center is to assist students in reaching their long range educational and vocational goals while ensuring that the transition from St. Philip's College is a seamless process. The Transfer Center assist students who are planning to transfer to another college or university by providing them with information regarding criteria for admission, selectivity of specific colleges, on and off-campus housing, tuition, financial aid and scholarship information and when and where one can apply.

Joint Admission Agreement (2+2)

The Joint Admission Agreement is a structured outline or degree plan for a specific major and catalog year from a 4-year college or university that specifies courses that can be completed while at a community college. The first two years of this plan outlines courses which can be taken at the community college (listed with community college course numbers). A student can complete any or all of the first two years of the plan prior to transferring to the senior institution.

This is an agreement between a two-year and four-year institution that allows the two-year student to declare his/her intent to transfer to that specific 4-year college or university. The student is considered "provisionally" admitted to the four-year college while attending the community college. This qualifies the student for a variety of services at the senior institution, depending on the college, and assures a smooth transition once the decision to transfer is made. The student will later be officially admitted at the time of transfer, provided that the student meets the transfer GPA and provides an updated transcript at the time the student plans to transfer. The transfer institution usually provides a transfer guide or 2+2 degree plan that the student should follow while at the community college.

If a student completes the entire first two years of any such 2+2 program with a minimum of 60 applicable degree hours, he or she will have satisfied requirements for an applicable Associate of Arts degree in Liberal Arts. These hours of credit must include 15 hours in core curriculum areas as required by the Southern Association of Colleges and Schools, which must include at least one course each in the following areas:

- Humanities/Fine Arts
- Social/Behavioral Sciences
- Natural Science
- Mathematics

Transfer Programs (Cont.)

2+2 Plans:

- ∂ Capella University
- ∂ Our Lady of the Lake University
- ∂ Regis University
- ∂ St. Mary's University
- ∂ Texas A&M Corpus Christi
- ∂ Texas A & M University-San Antonio
- ∂ University of the Incarnate Word
- ∂ University of the Incarnate Word Pre-Pharmacy
- ∂ University of Texas at San Antonio
- ∂ University of Texas at Brownsville and Texas Southmost College
- ∂ University of Texas Health Science Center-Nursing
- ∂ Wayland Baptist University
- ∂ Western Governors University
- ∂ Wiley College

Accreditation & Affiliations

St. Philip's College is accredited by the Commission of Colleges of the Southern Association of Colleges and Schools to award degrees in Associate of Arts & Science, Associate of Health Sciences, Associates of Applied Science & Technology, along with Certificates of Completion.

SACS

1866 Southern Lane

Decatur, GA 30033-4097

(404) 679-4501

www.sacscoc.org

St. Philip's College is also approved and governed by the Texas Higher Education Coordinating Board, National Accrediting Groups for Allied Health and Nursing Programs and the Federal Aviation Administration.

Member of:

American Association of Community and Junior Colleges

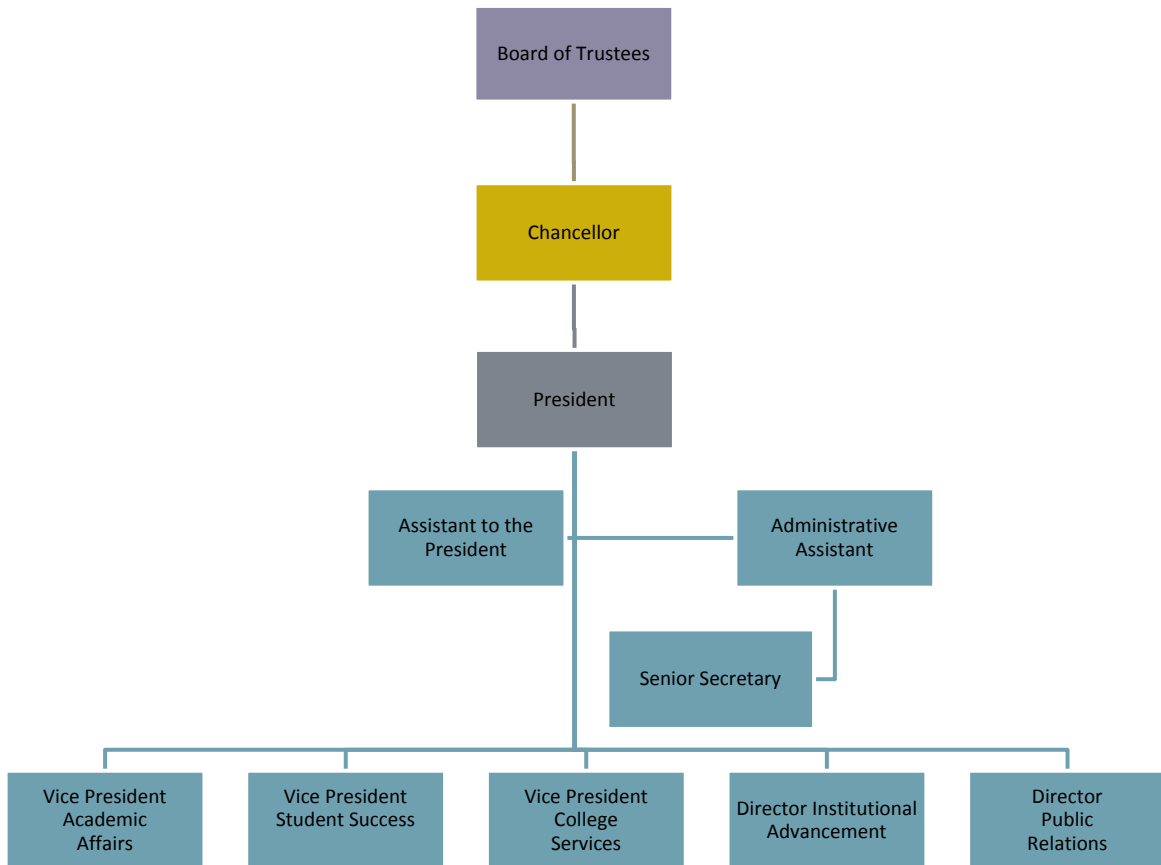
Texas Junior College Association

Texas Public Community and Junior College Association

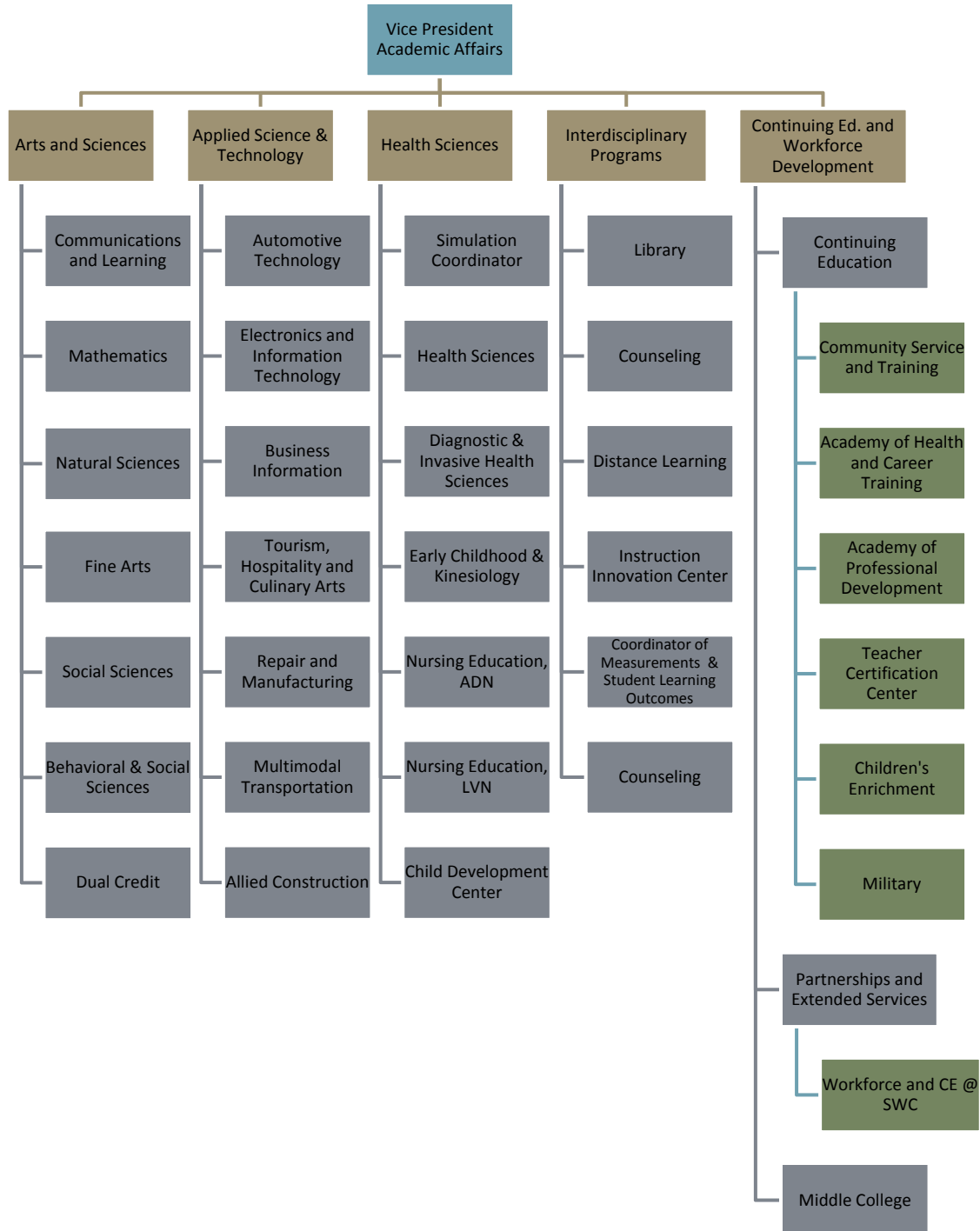
Texas Community College Teachers Association

The Association of Texas Colleges and Universities

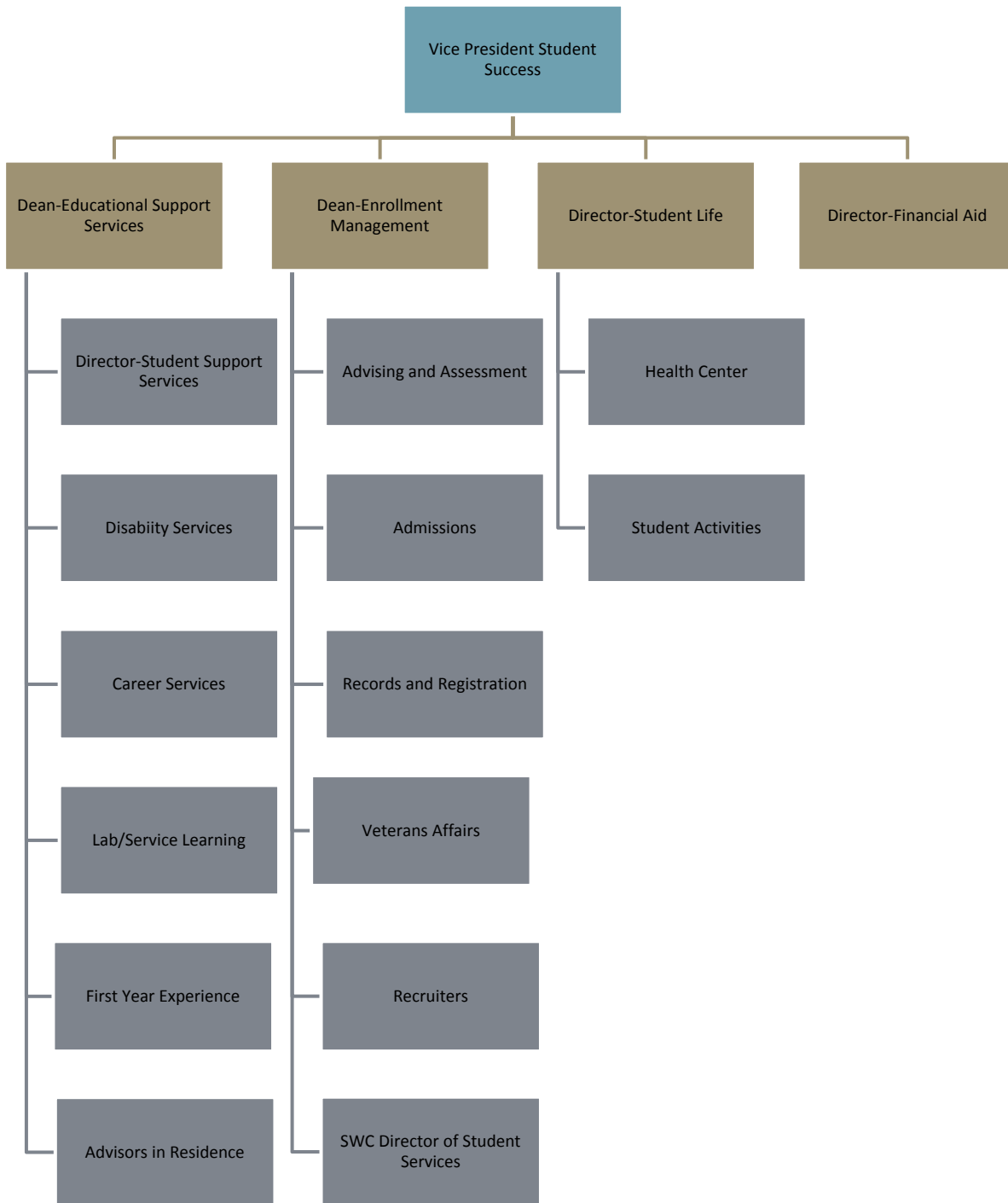
St. Philip's College



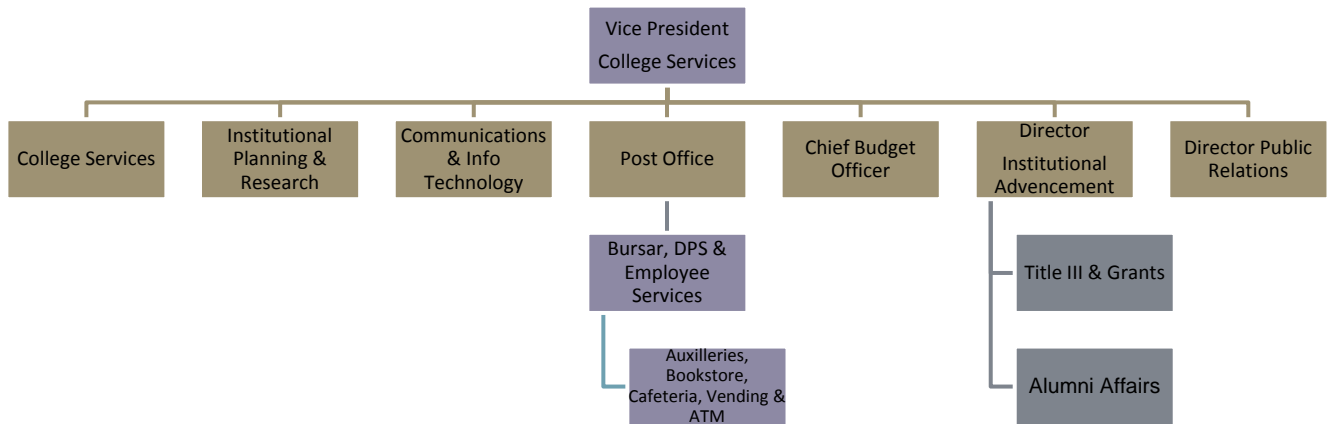
Academic Affairs



Student Success



College Services



Divisions

Arts & Sciences

Programs in the Division of Arts and Sciences are designed to assist students in developing their analytical reasoning ability, their communication and human relations skills, and their perception of the world. The division aims to provide students with an educational environment that stimulates creativity, critical thinking, personal growth, and a lifelong appreciation of learning.

The Division includes several multi-disciplined departments: Behavioral Sciences; English and Speech; Fine Arts; Mathematics; Natural Sciences; Reading, Education & Foreign Languages; and Social Sciences. Together, the departments offer forty-five degree programs, including a distance learning Liberal Arts degree option with courses available by telecourse and/or Internet. A variety of instructional delivery systems serve students morning, afternoon, evenings, and weekends with real time and distance learning options.

The Division manages developmental education in Reading, English, and Mathematics. Special initiatives include the Bridges Program that offers instruction to assist high school students with successful completion of the THEA Test. Other partnerships with public middle and high schools include the Dual Credit Program and the Natural Sciences Tex-Prep Pre-Engineering Program. In addition, the Fine Arts Music Advancement Program offers scholarships for music instruction to middle school students in SAISD.

Co-curricular activities organized by the departments enhance student learning: Fine Arts musical recitals, art exhibits, and theatre productions, as well as, the publication of the literary journal, The Artemisian Review by the Communications and Learning Department and lectures and debates sponsored by Social and Behavioral Sciences, and lectures and science fairs sponsored by Natural Sciences. In addition, the Social and Behavioral Sciences Department sponsors the Phi Theta Kappa National Honor Society and the GIVE Honors Program; they also manage the ROTC program in cooperation with St. Mary's University.

To provide special assistance in writing for students, faculty, and the community, the Communication and Learning Department manages the Rose R. Thomas Writing Center.

Many classes in the departments are involved in service learning through the Do It! Program at St. Philip's College.

Applied Science & Technology

St. Philip's College has one of the more diverse inventories of applied and technical course offerings. The Texas Higher Education Coordinating Board in 1999 gave the Applied Sciences Division the largest number of exemplary recognitions ever given to one college in Texas. The departments within this division are: Business Information Solutions; Automotive Technology; Electronic & Information Technology; Tourism, Hospitality and Culinary Arts; Allied Construction; Multi-Modal Transportation Technology; Repair and Manufacturing Technology.

The Division of Applied Science and Technology believes that every student is of inestimable worth, deserving the most professional staff attitude and the finest and most intense personal interest that every person can possibly give.

Each degree and certificate plan is a goal directed to ensure that each course is relevant to the program title. The objective of each program is to develop job entry skills. However, each program allows sufficient latitude so students can select their own choice of electives based on their own interest area.

Health Sciences

The Division of Health Sciences was implemented in the fall of 2007 and includes Diagnostic & Invasive Health Sciences, Early Childhood, Physical Health & Clinical Services, Nursing Education and Vocational Nursing. The Division strives to meet the increasing need for skilled professionals in a dynamic health and fitness environment. These programs prepare students to become productive and contributing members of the health and fitness community.

The Allied Health Department prepares students for entry-level employment and/or skills upgrading in the healthcare industry through the following disciplines:

- Health Information Systems
- Histological Technician
- Medical Laboratory Technician
- Occupational Therapy Assistant
- Physical Therapy Assistant
- Radiography Technology
- Respiratory Care Technology
- Sonography Technology
- Surgical Technology

Most programs within the Allied Health Department are accredited by the appropriate program specific agency.

The Kinesiology Department has a multi-fold purpose for students, as well as faculty and staff. The Department offers course work leading to an Associates of Health Science Degree and eventual transfer for students who want to pursue a career in Kinesiology. General activity classes are offered for all students who want to improve/maintain fitness and/or learn new skills. Intramural and extramural activities are encouraged for students who want a competitive experience. An open gym is available to the entire St. Philip's community for those who want to work out on their own.

St. Philip's College established its first health care program, the Vocational Nursing Program, in 1949 with 12 students and the Associate Degree Nursing Mobility (ADN) Program in 1998. Today, the Vocational Nursing (VN) Program has grown to a current enrollment of approximately 200 students on two campuses, Martin Luther King Campus and New Braunfels extension campus. It is the philosophy of the Nursing Education Department that health care must be administered in a holistic manner that empowers the client to continually strive toward a healthy adaptation to their ever changing environment.

The graduates of St. Philip's Nursing programs have been meeting the needs of the local healthcare community for over 57 years. Through their entry into the nursing profession, these nurses have become the leaders, caregivers, teachers, role models, and advocates who make a difference every day in the health and welfare of the community.

Institutional Resources

Center for Learning Resources

The Learning Resource Center's mission is to provide an educational environment which stimulates leadership, personal growth, and a lifelong appreciation for learning while focusing on the importance of being responsible to a population rich in its ethnic, cultural and socioeconomic diversity.

The Center for Learning Resources is comprised of three service components: the Library, Computer Operations and Media Services. Resources are available to enhance classroom instruction and meet the information needs of students, faculty, staff, and administrators. A large number of resources are available on and off-campus at either the MLK library or the branch library at the Southwest Campus.

The Library – The LRC's Web Site provides patrons with quick access to an array of scholarly research materials in different formats. Although the College library has 145,505 cataloged items, including over 63,190 books in its collection, electronic resources have grown greatly with over 28,000 books in digital format and 166 audio books. The Library subscribes to over 420 current print periodicals; however, the 94 electronic full-text databases and periodical indexes offer access to thousands of articles from journals, magazines, newspapers and books.

Additionally, the MLK Campus LRC has over 110,000 full-text microfiche, growing DVD (movie), CD (music) and video collections. SWC LRC has 41 DVDs, 1,324 videos and 82 periodical subscriptions. Other resources such as anatomical models for biology and medical program students are available at the MLK Campus.

The LRC's Web Site also provides patrons with quick access to electronic links to other libraries, as well as to research guides, bibliographies, general information and monthly list of new materials.

Computer Operations – The LRC offers 150 Dell computers that are available for student projects, email, Internet browsing and research. LRC faculty instructs students on the use of the World Wide Web and all other LRC resources for research. SPC faculty may contact the Reference Librarians to schedule bibliographic/library instruction for their classes. Notebook computers are loaned to First-Time-In-College (FTIC) students on a semester-by-semester basis. (See FTIC Counselors for application process).

Media Services and Archives – Media Services provides the SPC campuses with non-print-oriented instructional support. It supplies and maintains most of the audio-visual equipment that is used throughout the campuses. It also produces instructional and promotional materials for College programs and events. Original materials are created using some of the latest technology in the areas of graphics arts, studio art, photography, educational television, and sound services.

St. Philip's College Archives is the official repository for historical records created by and about the College. Access is granted on the basis of age, condition and content of the records. Researchers are required to request permission to publish and to note copyright permission and credit in print.

Instructional Technologies

The Instructional Technologies (IT) Department's mission is to work hard to provide the finest computer labs equipped with the best modern equipment and instructional software for student use and instruction. The department provides the faculty and staff with workstations and software needed to support the educational process. They install the necessary software and they make sure all systems work smoothly together.

- *Technologies Services for Students* – Many academic fields use computers as an aid to instruction. The IT department provides computer labs and required software for those that do. They also have an open lab at both the Martin Luther King (MLK) Campus and the Southwest (SWC) Campus. These labs are available for unstructured study and have the same software found in the classroom labs. For those requiring additional course help, online tutoring is available. Wireless connection to the Internet is available as is special software and equipment for students with disabilities.
- *Faculty and Staff Services* –The IT Department provides computer labs of various sizes for instruction. These can be reserved online. They perform software installation and configuration and hardware maintenance and repair for lab and office computers. They also setup, configure and troubleshoot printers, SMART boards, projectors, scanners and other computer-related equipment.

Instructional Innovation Center

St. Philip's College Instructional Innovation Center is a resource center dedicated to providing a broad range of professional development opportunities for all staff and faculty including but not limited to: technical, curricular and personal growth training; curriculum and course development in traditional, technologically enhanced and distance learning environments; classroom research and assessment; technology and media support; and specialized activities and events to support excellence in teaching, learning and service.

- *Center for Education Research* – Conducts serious research on contemporary education topics. Provides an excellent platform to promote professional publications/articles, thus increasing the college's national prominence.
- *Heart of Learning* – The Heart of Learning Group is an information association of members of the St. Phillip's College community who are committed to building awareness, deepening learning, and sustaining growth in ourselves as well as those for whom we all work and with whom we all learn – our students. Through dialogue, discussion and demonstration, the Heart of Learning group seeks to nurture the well being of all those who are part of the St. Phillip's College learning community.
- *Master Teacher* – The Master Teacher Program is a certification program where participants actively engage in reflective and creative exercises and dialog to improve their own teaching, as well as share their teaching experiences.

Continuing Education & Extended Services

Within the framework of the College's philosophy, mission, and goals, and in cooperation with government and military agencies, Continuing Education provides education, training, and employment programs. In addition, seminars, workshops, conferences, and certification updates are provided for community organizations, business, industry, military, and professional groups. A Continuing Education Unit (CEU) is the basic unit of measurement for an individual's participation in the College's offerings of non-credit classes, courses, and programs. A CEU is defined as ten (10) contact hours of participation in an organized continuing education experience under responsible sponsorship, capable direction, and qualified instruction.

Continuing Education has the flexibility and technology to respond rapidly to the needs of the community and to implement courses in programmatic areas, such as adult basic education, allied health, business, industry, and social services. Continuing Education also serves as an outreach mechanism for directing prospective students into appropriate credit programs within the College.

Bringing the College into the community by using satellite locations, St. Philip's College Continuing Education offers a wide variety of short, non-traditional courses independent of the credit certificate or degree programs.

- Vocational/Technical
- Classes in Self-Improvement and Personal Development
- Leisure time, special-interest courses for hobbies, recreation, and diversion
- Learning opportunities designed for groups with special needs
- Workforce Development

Evening Programs – Evening Programs provide an opportunity for a student to pursue his or her educational goals in the evening. Educational Support Services that include library services, tutoring, open-use computer labs, and a writing center are available to evening students. Student services, such as

Extended Services – As the outreach arm of the college, Extended Services is dedicated to serving learners, wherever demonstrated need prevails, with quality educational programs. Off-campus satellites provide systematic support service systems that can assist adult, part-time students in adjusting to the college learning experience.

Weekend College – The Weekend College grew out of the understanding that adults desire to learn and grow, but often are unable to attend traditionally scheduled classes. The curriculum is designed to serve a wide population of learners whose needs are vaguely understood and inadequately met by traditional academia. At a minimum, working adults require a curriculum with flexible time commitments and respect for individuality. Students can earn an associate's degree and/or certificate by attending classes only on Friday nights, Saturdays, and/or Sundays through the Weekend College program.

Southwest Campus

The Southwest Campus has been a vital part of St. Philip's College since mid-1980. Located at 800 Quintana Road, the Southwest Campus is the site of the Multi-Modal Transportation, Allied Construction Trades, Architectural Computer Aided Drafting & Interior Design, and Repair and Manufacturing Departments, with ten programs of Study. The three main buildings of Southwest Campus also house administrative offices, the Learning Resource Center, Advising and Enrollment Services, Continuing Education/Contract Training, SAISD Phoenix High School, Youth Opportunity Program, Workforce Development Skills and GED Academy, Alamo Area Aerospace Academy, Texas One Stop Workforce Center, and other specialized workforce development training programs. Several of these programs offer students the opportunity to train at community sites at the San Antonio Housing Authority and MAUC locations.

The Southwest Campus serves a vital role as the South Texas region's primary center for technical and industrial training and education. A major satellite operation of St. Philip's College, Southwest Campus serves approximately 2,000 students each semester, providing classroom instruction and hands-on-training for careers in high-skill, high-wage fields such as allied construction, industrial manufacturing, aviation technology, railroad operations, architectural drafting, CNC, welding, heavy equipment maintenance and repair, as well as a variety of other manufacturing fields.

The state's first community college officially designated a "One-Stop Texas Workforce Center," the Southwest Campus serves as one of four centers linking welfare recipients and displaced workers to area education opportunities. The campus also remains a major training and development resource for business and industry, offering specialized training to help employees upgrade their technical on-the-job skills.

Located near Kelly USA, Southwest Campus is strategically positioned as a world-class technical education center capable of meeting the needs of base employees facing career transitions as well as incoming employers in need of a highly skilled workforce.

In May 2005 the Multi-Disciplinary Instructional Center (MDIC), a 26,747 square foot building, with an approximate cost of \$2,274,000 was completed. It replaced Building 3004, which was demolished. The two-story MDIC houses five Instructional Technologies labs; a technician's workroom, storage room and server room; offices; conference room; faculty resource room; and faculty/staff and student break rooms. A video conference room, a seminar room and eight classrooms are located in the second floor.

In the spring of 2009 a 21,742 square foot state-of-the-art diesel lab facility was completed. It includes 10 instructional diesel technology bays housed within a one-story building. The new lab allows the college to provide students with the most up-to-date technological training required for diesel and heavy machinery maintenance in the San Antonio area.

The ceremony to celebrate the opening of the diesel lab also included a ribbon cutting to commemorate several classroom renovations in Building 3020 at Southwest Campus.

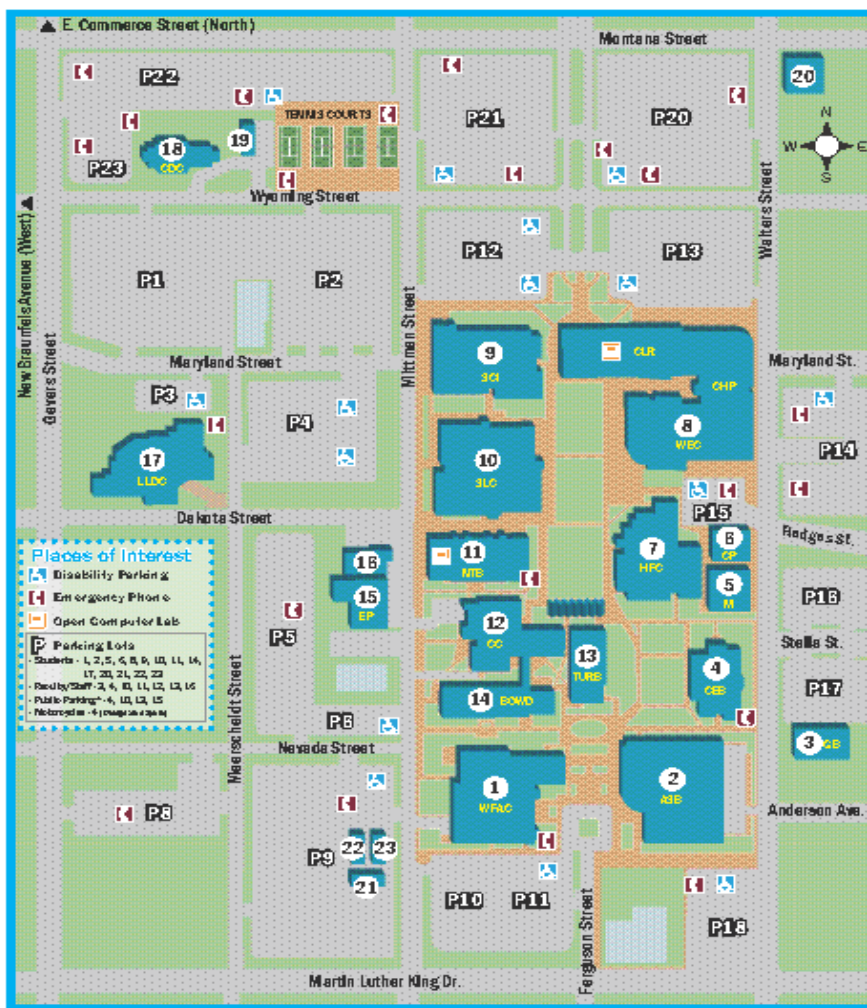
St. Philip's College Physical Facilities

SITES	ACREAGE	# OF BUILDINGS	SQ. FT.
MLK Campus	50.82	18	765,244
Southwest Campus	15.7	7	315,710
Advanced Technology Center	1.5	1	22,865
Total	68.02	26	1,103,814
MLK CAMPUS			
Building			
Center for Health Professionals	115,169	2009	n/a
Center for Learning Resources	68,018	2009	n/a
Welcome Center	30,449	2009	n/a
LLDC	12,831	1997	n/a
Applied Science Building	87,400	1993	n/a
Bowden Building	20,830	1953	1996
Campus Security Building	1,857	1977	n/a
Continuing Education Building	10,000	1995	n/a
Child Care Center	6,700	2001	n/a
Maintenance Shop	8,608	1972	n/a
Norris Technical Building	85,829	1972	1998
Gymnasium	25,833	1942	1990
Central Plant	8,070	1975	1995
Science Building	83,829	1992	n/a
Campus Center	20,064	1953	1986
Sutton Learning Center	119,740	1975	1998
Watson Theatre & Fine Arts	50,360	1993	n/a
Turbon Student Center	9,657	1953	1996
Total	765,244		
SOUTHWEST CAMPUS			
Building			
Multi-Disciplinary Instructional Center	26,747	2005	n/a
Aircraft Technology Center	41,479	1937	1999
Industrial Technology Center	225,742	1937	1990
Diesel Technology Center	10,694	2008	n/a
Diesel Technology Lab	11,048	2008	n/a
Total	315,710		

MLK Campus Map

ALAMO COLLEGES **MLK CAMPUS MAP**
 1801 Martin Luther King Drive,
 San Antonio, Texas 78203
ST. PHILIP'S COLLEGE (210) 486-2000

- 1** Watson Fine Arts Center (WFAC)
Fine Arts, Theatre, Kathryn Morgan Gallery
- 2** Applied Science Building (ASB)
Automotive Technology, Cisco Academy, Electronic Systems Tech, Grants, Microsoft Academy, Institutional Advancement, Planning and Research
- 3** Grounds Building (GB)
- 4** Continuing Education (CEB)
Workforce Development and Continuing Education Administration
- 5** Maintenance (M)
- 6** Central Plant (CP)
- 7** Health and Fitness Center (HFC)
- 8** Welcome Center (WEC)
Admissions, Advising, Assessment and Testing, Business Office (Bursar), Counseling, Dual Credit, Financial Aid, International Student Services, Records and Registration, Veterans Affairs
- 9** Center for Health Professions (CHP)
Dr. Frank Bryant, Jr., Human Patient Simulation Center and Nursing Laboratories, Health Sciences Education, Nursing Education
- 10** Center for Learning Resources (CLR)
Distance Learning, Library, Media Services
- 11** Norris Technical Building (NTB)
English/Speech, Equity Center, Information and Communications Technology, Mathematics, Read/Educ. Foreign Lang., Rose R. Thomas Whiting Center, Tutoring Lab
- 12** Campus Center (CC)
Bookstore, Heritage Room, Tiger Café, Tourism, Hospitality & Culinary Arts, US Post Office
- 13** Turbon Student Center (TURB)
Student Life
- 14** Bowden (BOWD)
Administrative, Computer Technology, Accounting, Business Administration, Business Management, Computer Science, Web Developer
- 15** Electrical Plant (EP)
- 16** Campus Police
- 17** Learning and Leadership Development Center (LLDC)
CE Community Training Center, City of San Antonio One Stop Center GED classes
- 18** Child Development Center (CDC)
Child Care Center
- 19** Tennis Courts
- 20** Future House of Pride
- 21, 22, 23** Portable Buildings

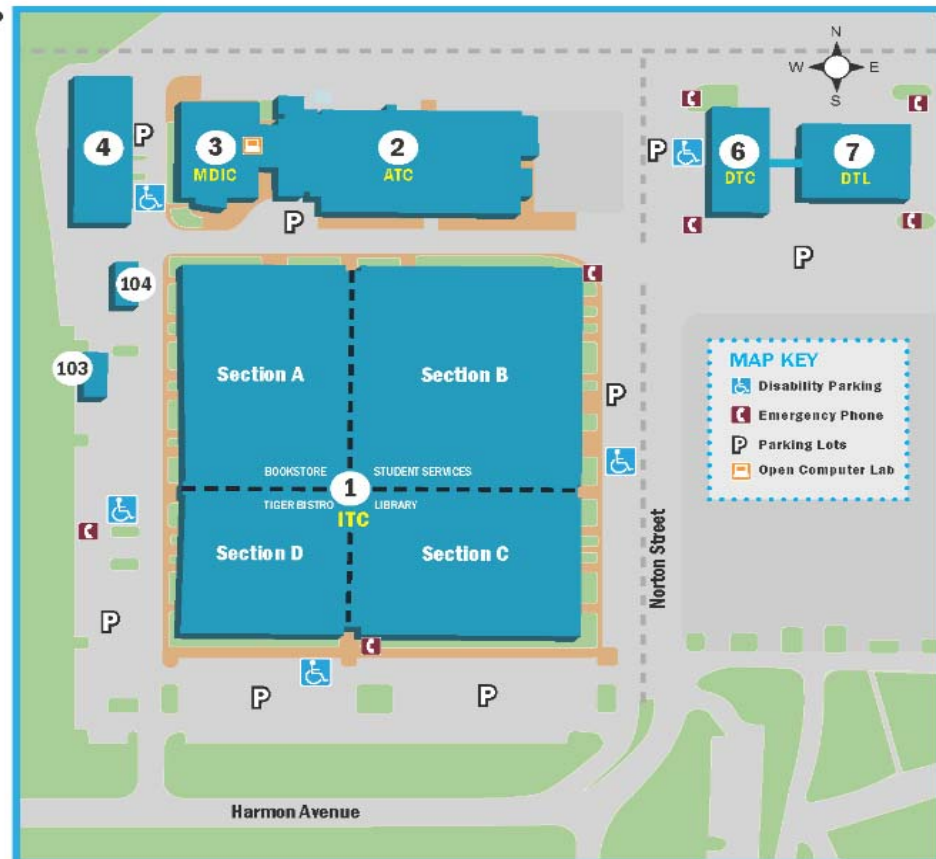


*Campus police can issue temporary parking permits on location. For more information call campus police at (210) 486-2000. Updated by Michelle V. Jansen, 6/6/10

S.W. Campus Map



- 1 Industrial Technology Center (ITC), Building 1**
 - **Section A** - Air Conditioning Program, Bookstore, Electrical Program, Plumbing Program, Manufacturing Technology Program
 - **Section B** - Auto Collision Repair Program, Business Office (Bursar), Home Building Program, Mailroom, Print Services, Student Support Services Center (Advising, Financial Aid, Records and Registration)
 - **Section C** - Centers of Excellence, Learning Resource Center (Library), Partnerships and Extended Services, Phoenix Middle College Program
 - **Section D** - Campus Police, Manufacturing Technology Academy, Tiger Bistro, Welding Program
- 2 Aircraft Technology Center (ATC), Building 2**
Aircraft Technology Classrooms and Lab
- 3 Multi-Disciplinary Instructional Center (MDIC), Building 3**
Alamo Area Aerospace Academy, College Health Center, College Services, IT Open Computer Lab, Information and Communication Technology, Multi-Modal Transportation Technology
- 4 Building 4 - Material Management**
- 6 Diesel Technology Center (DTC), Building 6**
Diesel Technology Classrooms
- 7 Diesel Technology Lab (DTL), Building 7**
Diesel Technology Lab
- 103 Modular Building 103**
- 104 Modular Building 104**



*Campus police will issue a temporary parking permit for visitors. For more information call the SWC campus police at (210) 406-2596.

Updated by Michelle Vazquez, 6/15/10

ENROLLMENT TRENDS

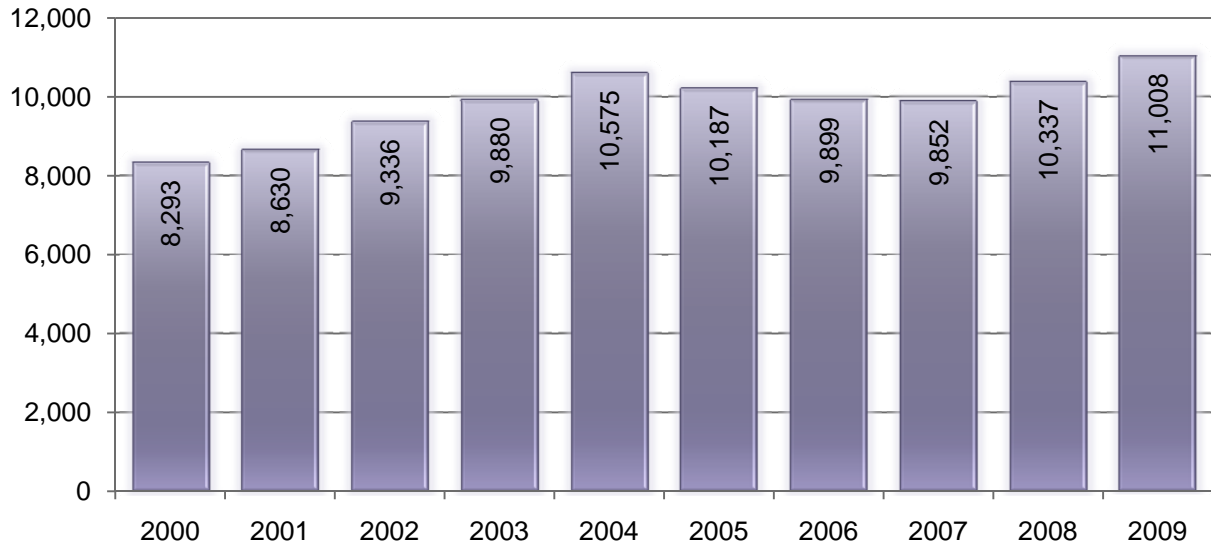
Credit Programs

Fall Semesters 1999 – 2008	28
Spring Semesters 2000 – 2009.....	28
Summer Session I 2000 – 2009.....	29
Summer Session II 2000 – 2009	29
By Classification (Percentage).....	30
Gender	31
Ethnicity.....	31
Age.....	32
Part-Time vs. Full Time	34
Day vs. Evening	34
Divisions	35
Contact Hours	36
Distance Learning	37
Developmental Education.....	37
Continuing Education – Contact Hours	38
Continuing Education – Unduplicated Enrollment	39

Enrollment

Fall Semesters 2000 - 2009

Students

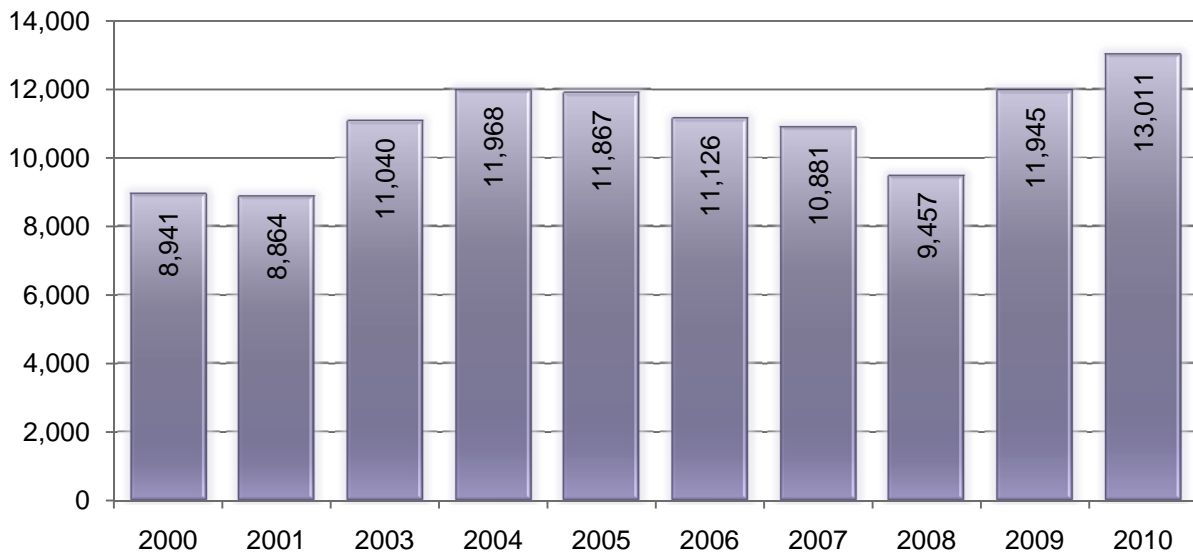


Enrollment

Spring Semester 2001-2010

(Includes Fall Flex II)

Students



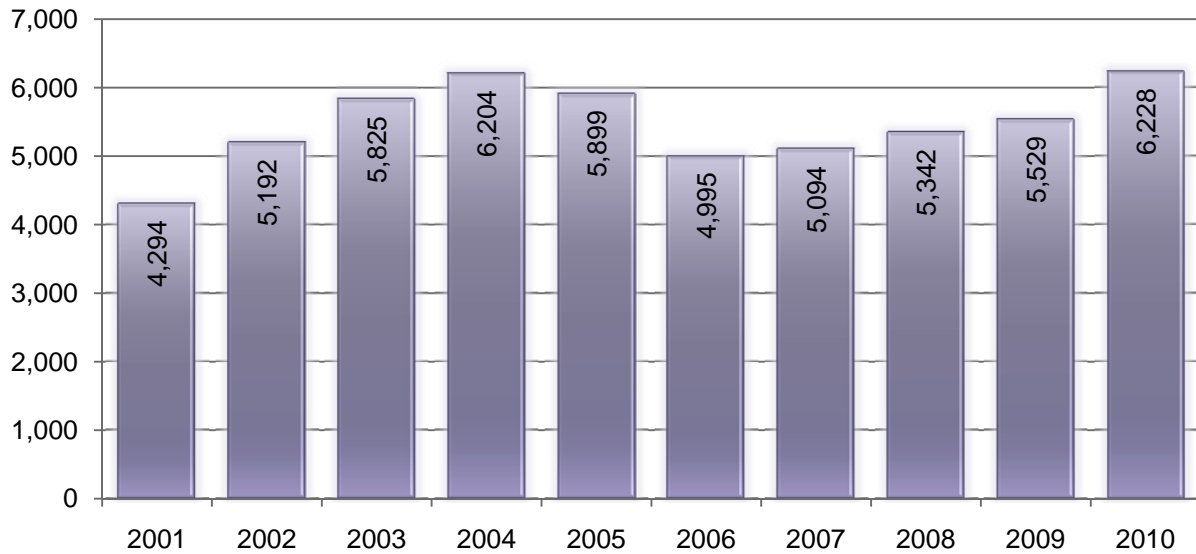
Source: RCA003; CBM001

Enrollment

Summer I Semester 2001-2010

(Includes Spring Flex II)

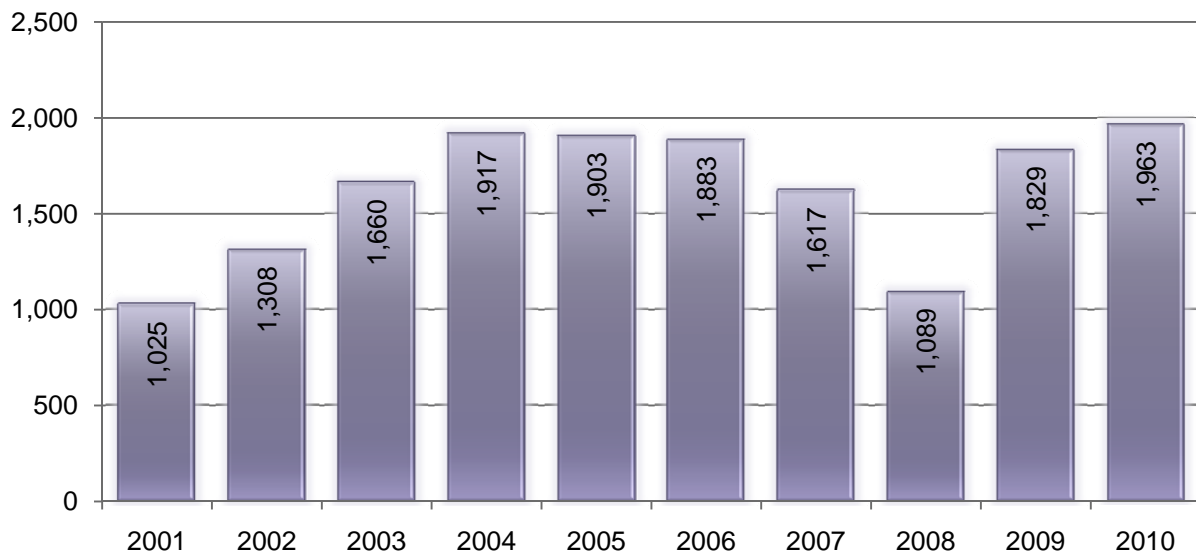
Students



Enrollment

Summer II Semester 2001-2010

Students



Source: RCA003; CBM001

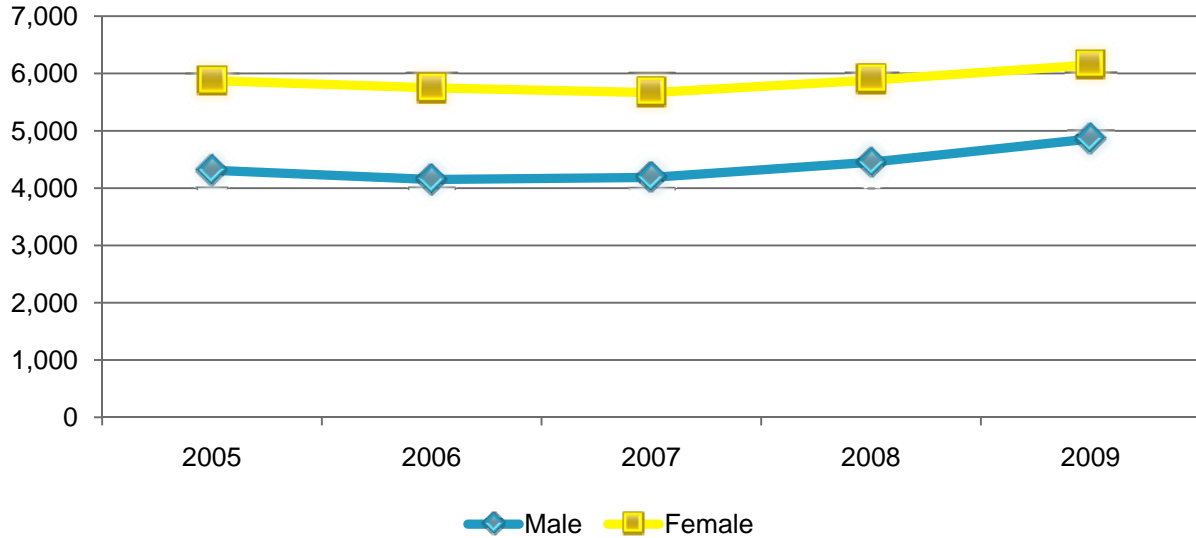
	2005	2006	2007	2008	2009
Fall					
Students	10,187	9,899	9,852	10,337	11,008
Gender					
Male	42%	41 %	42%	43%	44%
Female	57%	58%	58%	57%	56%
Ethnicity					
Black	17%	17%	16%	16%	15%
White	31%	32%	33%	34%	36%
Hispanic	49%	48%	47%	47%	46%
Other	2%	3%	2%	3%	3%
Age					
18 or Less	11%	13%	13%	22%	23%
19-20	16%	16%	17%	16%	15%
21-22	13%	12%	12%	11%	11%
23-24	9%	9%	9%	8%	8%
25-26	7%	8%	8%	7%	7%
27-28	6%	6%	7%	6%	6%
29-30	4%	5%	5%	5%	5%
31-34	8%	8%	8%	7%	7%
35-39	7%	7%	8%	7%	7%
40-49	9%	9%	9%	8%	8%
50+	3%	3%	4%	3%	3%
Part-Time/Full-Time					
Full-Time	36%	37%	36%	30%	31%
Part-Time	64%	63%	64%	70%	69%
Day/Evening					
Day	67%	70%	71%	76%	77%
Evening	14%	14%	13%	11%	7%
Concurrent	19%	17%	17%	13%	16%
Division					
Applied Sciences	47%	48%	48%	32%	31%
Arts & Sciences	30%	31%	31%	46%	21%
*Health Sciences			20%	20%	22%
Non-Specific	23%	21%	2%	2%	26%

*Divisional Changes Occurred in 2007

Source: CBM001; RCA003

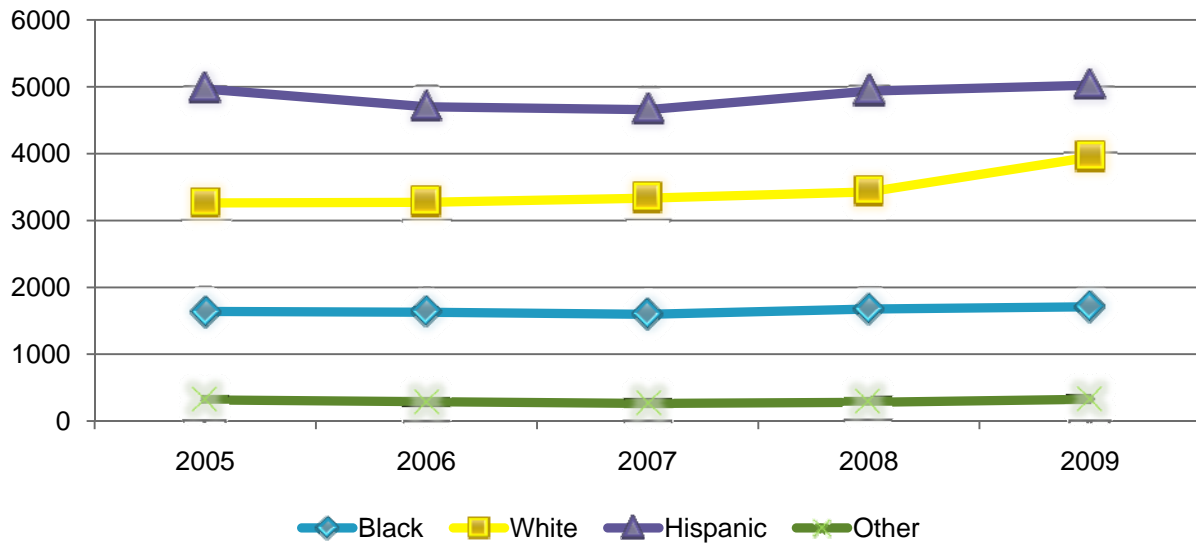
Gender

Fall	2005	2006	2007	2008	2009
Male	4,312	4,150	4,185	4,453	4,858
Female	5,875	5,749	5,667	5,884	6,150



Ethnicity

Fall	2005	2006	2007	2008	2009
Black	1,640	1,628	1,596	1,675	1,709
White	3,264	3,272	3,334	3,428	3,947
Hispanic	4,967	4,702	4,658	4,935	5,025
Other	316	291	264	281	327

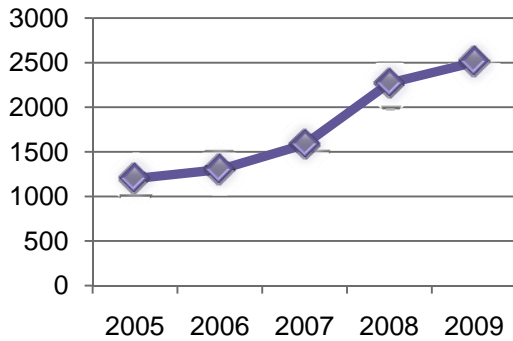


Source: CBM001; RCA003

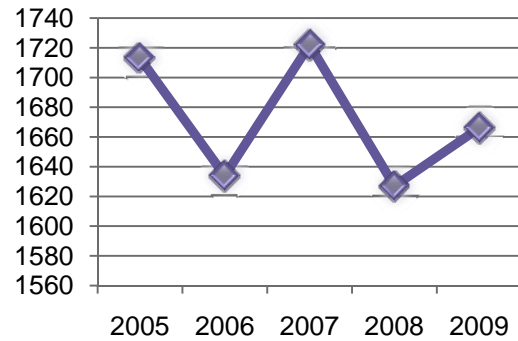
Age

Fall	2005	2006	2007	2008	2009
18 or Less	1,200	1,300	1,582	2,271	2,504
19-20	1,713	1,634	1,722	1,627	1,666
21-22	1,352	1,224	1,155	1,136	1,174
23-24	979	909	881	832	846
25-26	809	806	743	730	744
27-28	617	663	580	620	656

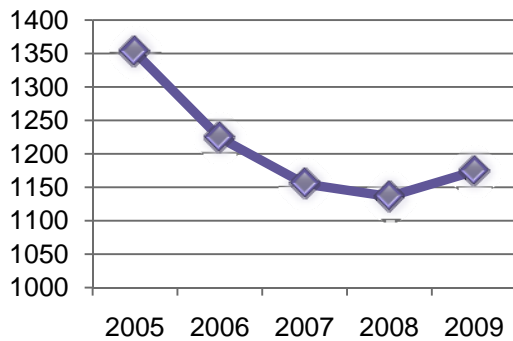
Age 18 or Less



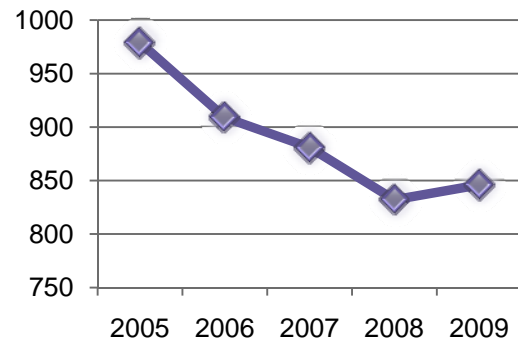
Age 19-20



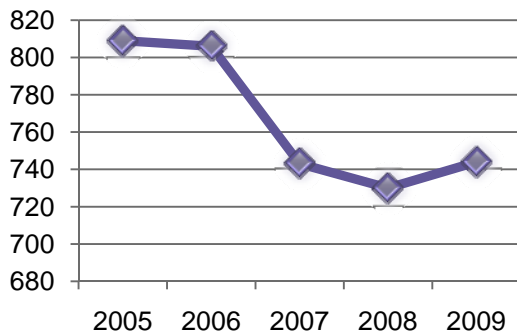
Age 21-22



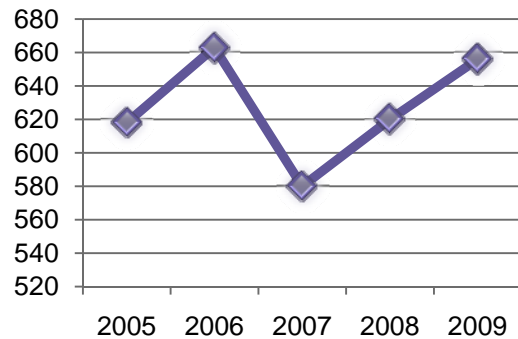
Age 23-24



Age 25-26



Age 27-28

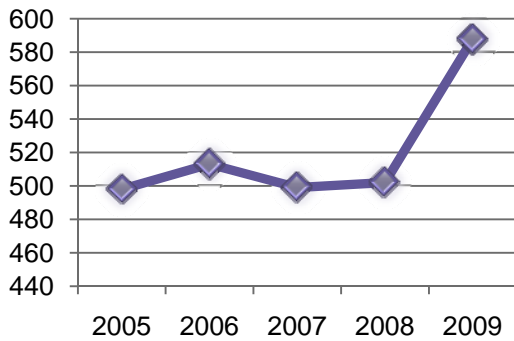


Source: CBM001; RCA003

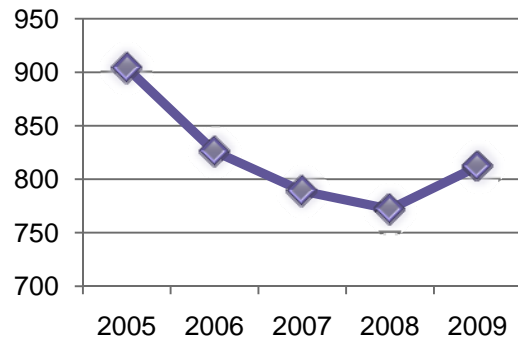
Age (Cont.)

Fall	2005	2006	2007	2008	2009
29-30	498	513	499	502	588
31-34	904	826	789	772	812
35-39	781	764	736	717	747
40-49	943	890	830	802	899
50+	391	370	335	328	372

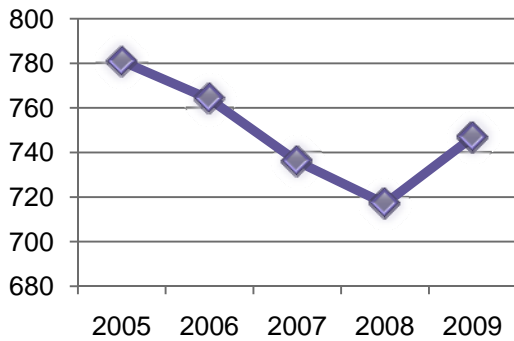
Age 29-30



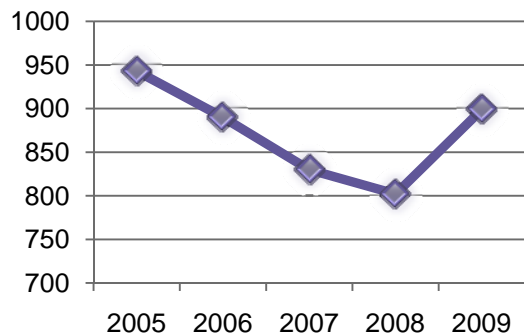
Age 31-34



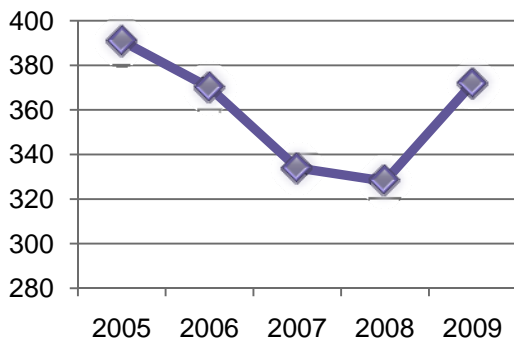
Age 35-39



Age 40-49



Age 50+

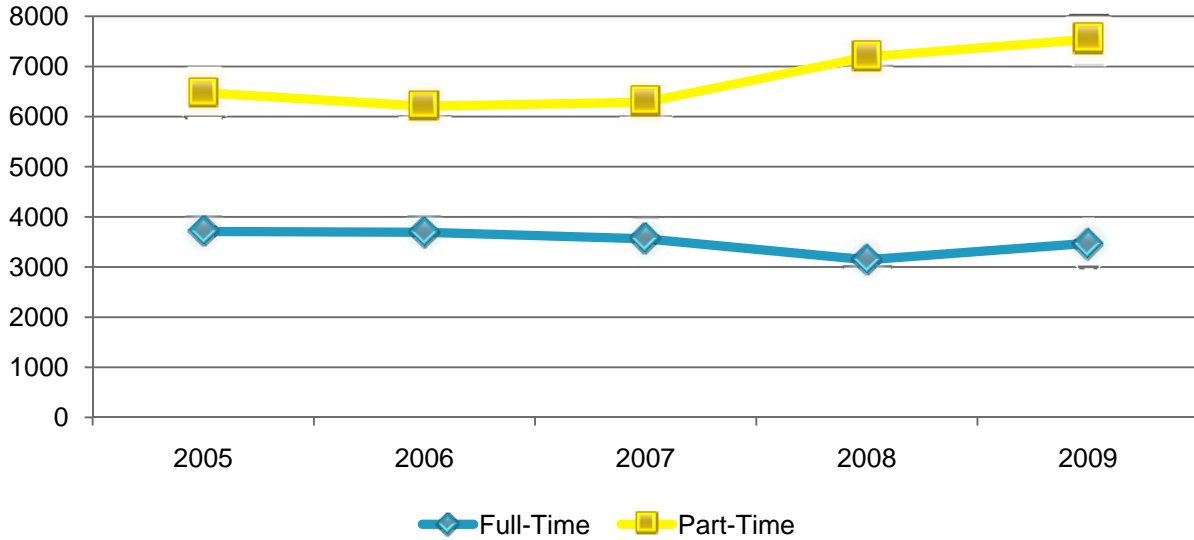


Source: CBM001; RCA003

Part-Time/Full-Time

Fall	2005	2006	2007	2008	2009
Full-Time	3,710	3,692	3,563	3,145	3,472
Part-Time	6,477	6,207	6,289	7,192	7,540

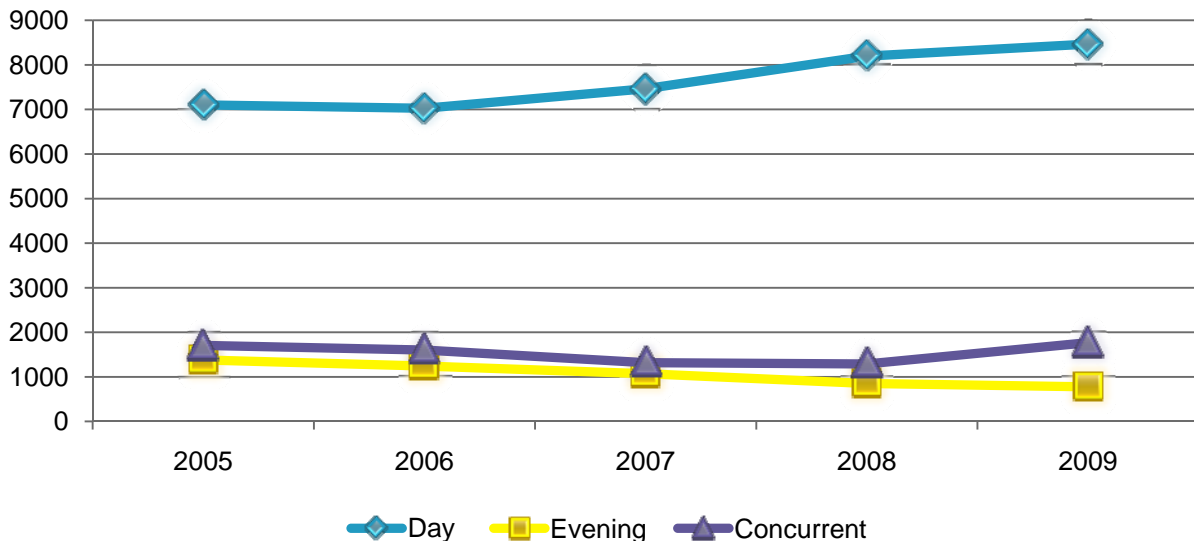
Source: RCA003



Day/Evening

Fall	2005	2006	2007	2008	2009
Day	7,101	7,027	7,463	8,196	8,465
Evening	1,379	1,242	1,071	851	777
Concurrent	1,707	1,603	1,318	1,290	1,766

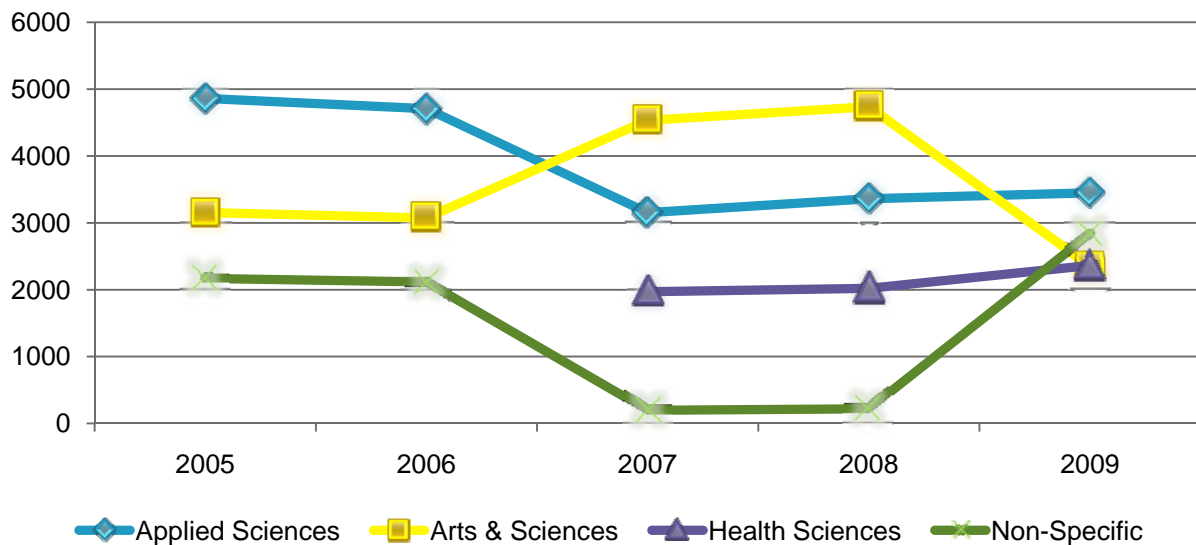
Source: RCA003



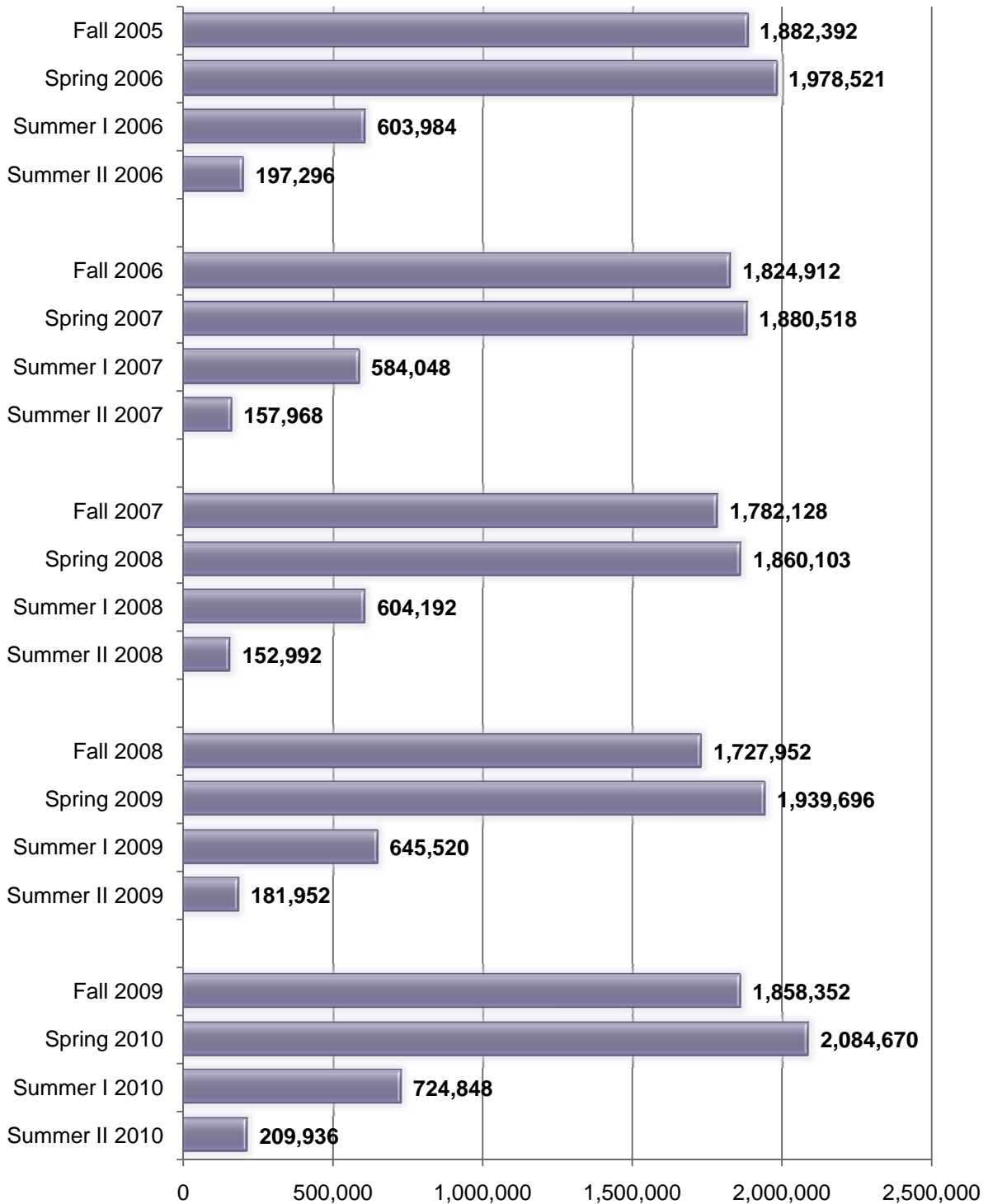
Division		2005	2006	2007	2008	2009
	Fall					
	Applied Sciences	4,862	4,709	3,152	3,360	3,450
	Arts & Sciences	3,155	3,073	4,533	4,736	2,361
	*Health Sciences			1,970	2,020	2,363
	Non-Specific	2,170	2,117	197	218	2,834

*Divisional Changes Occurred

Source: CBM001; SDM FOCEXEC; SDM.SPS



Contact Hours



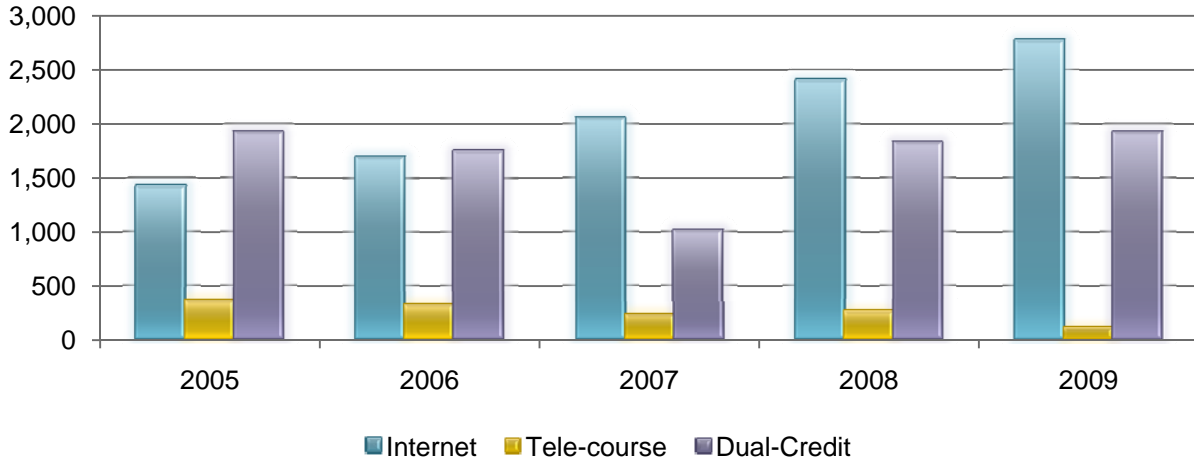
Fall Flex II included in spring; Spring Flex II included in summer I)

Source: CBM004

Distance Learning Enrollment - Unduplicated

(Includes Fall Flex II)

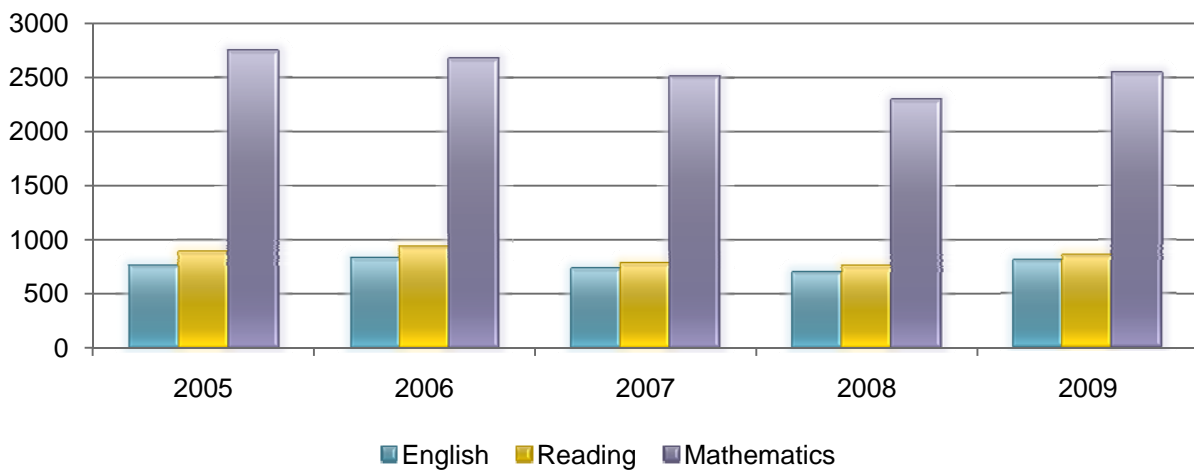
Fall	2005	2006	2007	2008	2009
Internet	1,417	1,697	2,055	2,400	2,771
Tele-Courses	358	322	232	257	108
Dual Credit	1,926	1,753	1,012	1,827	1,926



Source: SIS+ Database

Developmental Education

Fall	2005	2006	2007	2008	2009
English	757	824	727	699	808
Reading	885	933	778	753	855
Mathematics	2,744	2,670	2,508	2,290	2,538



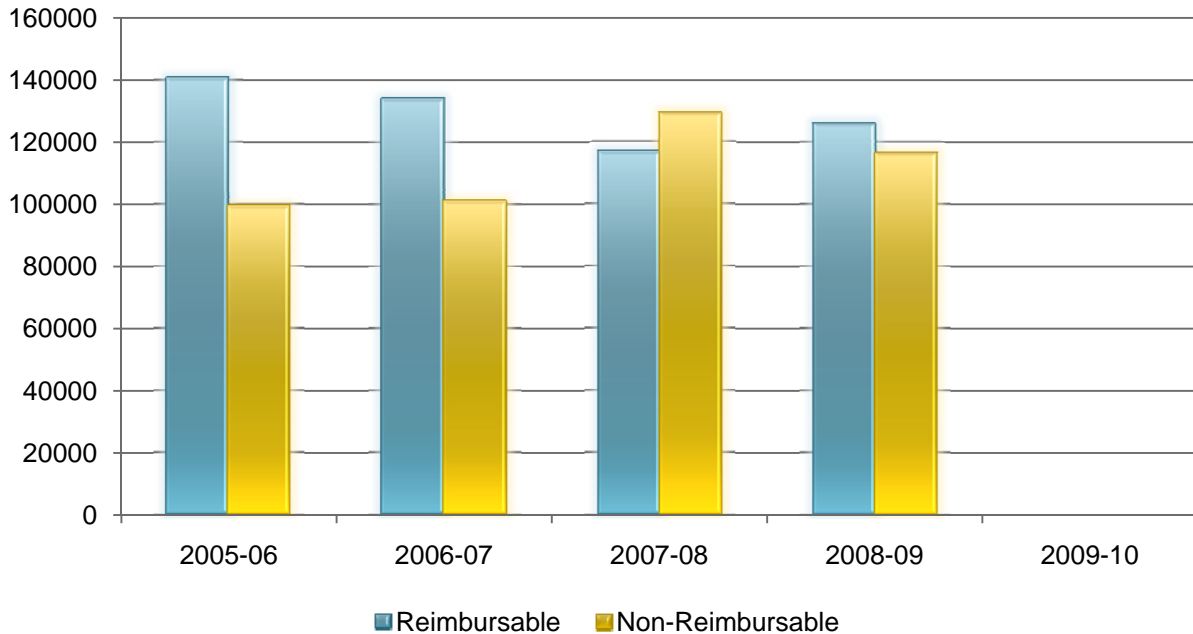
Source: SIS+ Database

Continuing Education: Contact Hours

	<u>Reimbursable</u>				
	2005-06	2006-07	2007-08	2008-09	2009-10
Quarter A	53,884	32,812	38,549	48,514	Currently
Quarter B	31,830	30,386	18,844	29,205	Unavailable
Quarter C	31,335	38,350	26,739	21,184	
Quarter D	23,534	32,296	32,430	27,046	
Total	140,583	133,844	116,562	125,949	

	<u>Non-Reimbursable</u>				
	2005-06	2006-07	2007-08	2008-09	2009-10
Quarter A	37,827	12,899	10,843	24,658	Currently
Quarter B	13,570	12,791	3,409	9,063	Unavailable
Quarter C	21,088	10,969	8,014	5,171	
Quarter D	26,753	64,406	106,888	77,497	
Total	99,238	101,065	129,154	116,389	

	<u>Grand Totals</u>				
	2005-06	2006-07	2007-08	2008-09	2009-10
Yearly Totals	239,821	234,909	245,716	242,338	



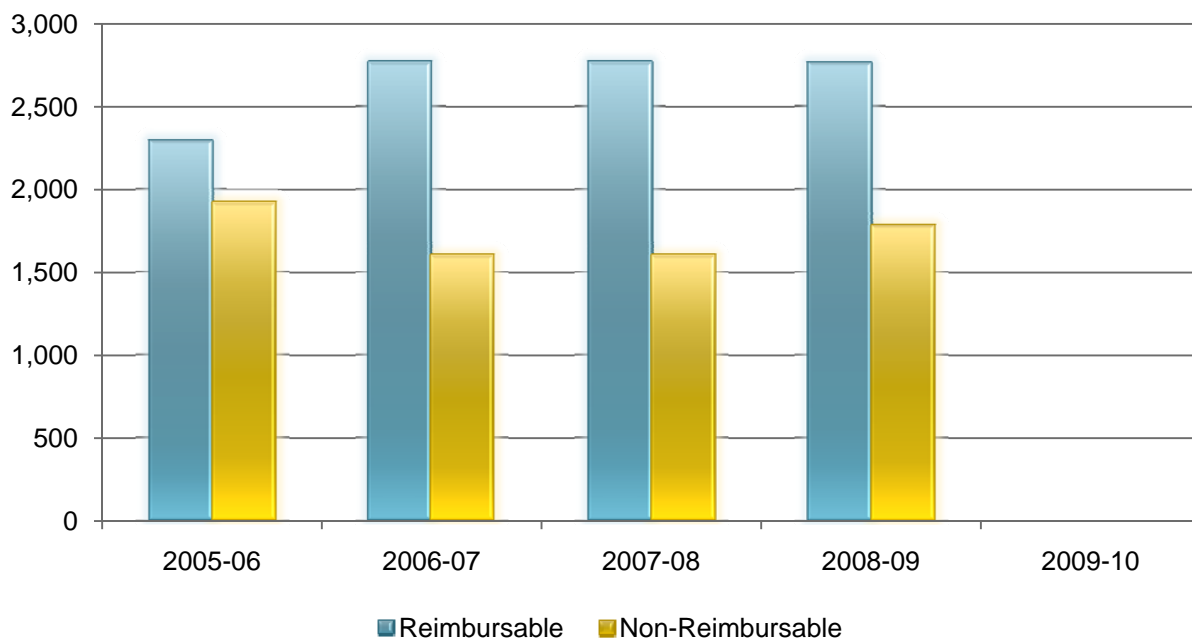
Source: Registrar's Report of Continuing Education Contact Hours and Enrollment

Continuing Education: Unduplicated Enrollment

	<u>Reimbursable</u>				
	2005-06	2006-07	2007-08	2008-09	2009-10
Quarter A	523	673	797	944	Currently
Quarter B	647	416	718	680	Unavailable
Quarter C	681	670	672	531	
Quarter D	559	533	578	609	
Total	2,410	2,292	2,765	2,764	

	<u>Non-Reimbursable</u>				
	2005-06	2006-07	2007-08	2008-09	2009-10
Quarter A	355	514	283	443	Currently
Quarter B	335	218	137	241	Unavailable
Quarter C	796	605	369	426	
Quarter D	670	578	811	671	
Total	2,156	1,915	1,600	1,781	

	<u>Grand Totals</u>				
	2005-06	2006-07	2007-08	2008-09	2009-10
Yearly Totals	4,566	4,207	4,365	4,545	



Source: Registrar's Report of Continuing Education Contact Hours and Enrollment

STUDENT PROFILE

General Information

Gender, Ethnicity, Age, Major, Hours Enrolled, Day vs. Evening 41

Top Ten

Arts & Science Majors 42

Applied Science & Technology Majors 42

Health Sciences Majors 43

Counties of Residence 43

States of Residence..... 44

Feeder High Schools 44

Feeder Zip Codes of Residence 45

Student Objective in Attending St. Philip's College 46

Intended Duration of Enrollment 47

Academic Experience on Entry 48

Student Employment Status 49

Financial Aid Awards 50

Registration 51

Academic Achievement

Graduation Degrees & Certificates Awarded..... 52

Graduates by Ethnicity 52

Degree & Certificate Trends..... 53

Grade Distribution Trends 54

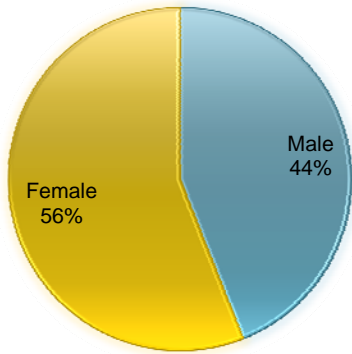
Fall to Fall Retention by Ethnicity 55

Retention of First-Time, Full-Time Degree-Seeking Freshmen by Ethnicity 56

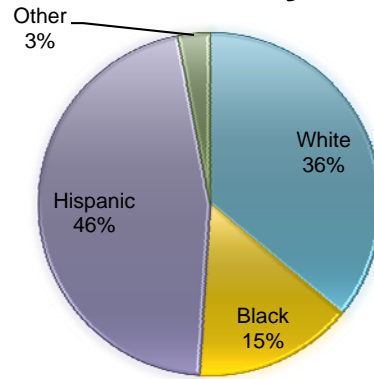
Retention by Department and Self-Declared Major 57

Fall 2009: 11,008 Students

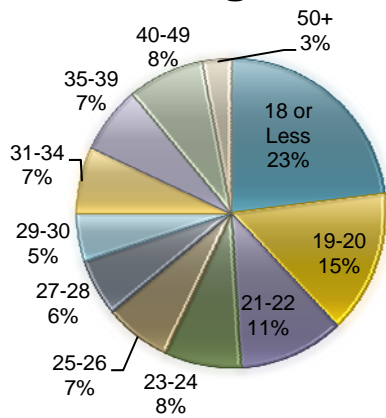
Gender



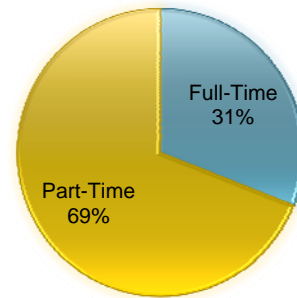
Ethnicity



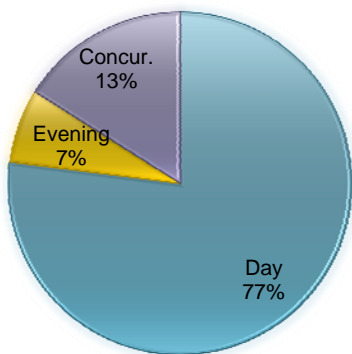
Age



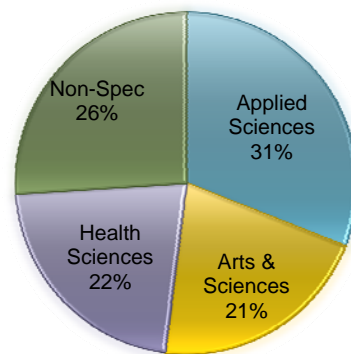
Part-Time/Full-Time



Day/Evening

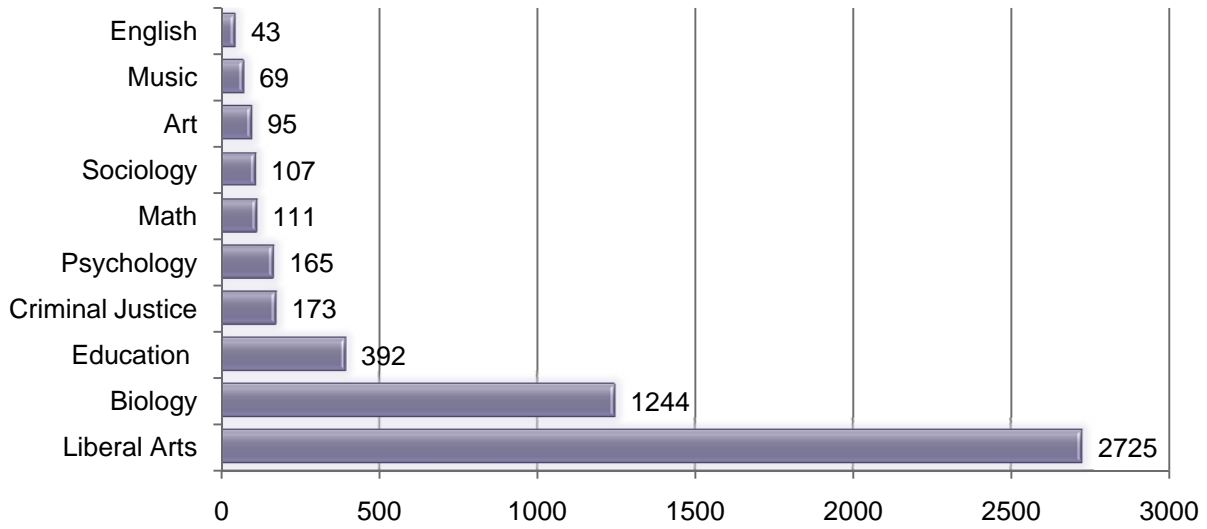


Division

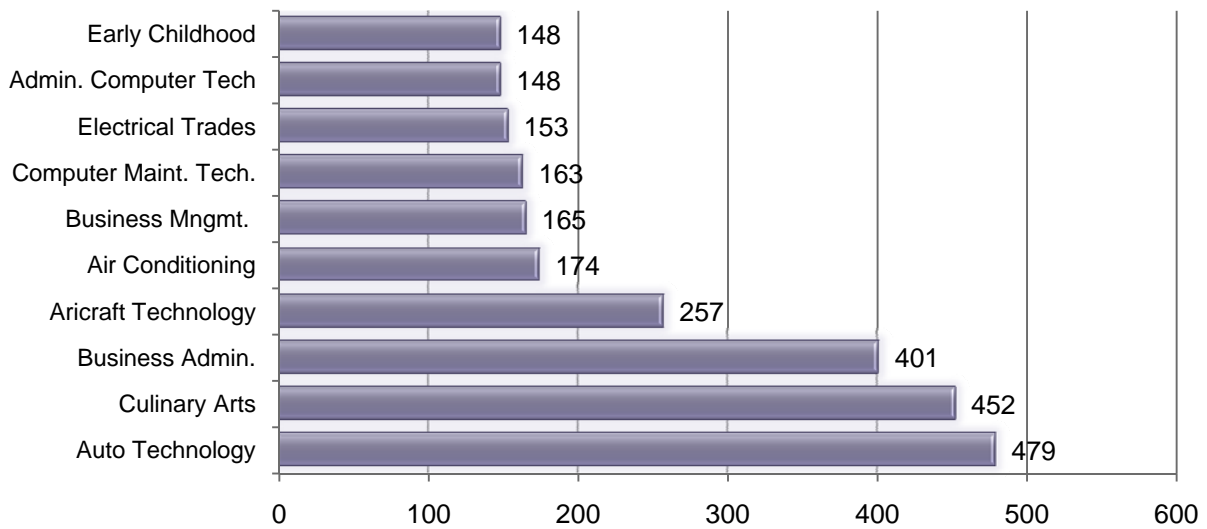


Source: CBM001; RCA003

Top 10 Arts & Science Majors Fall 2009

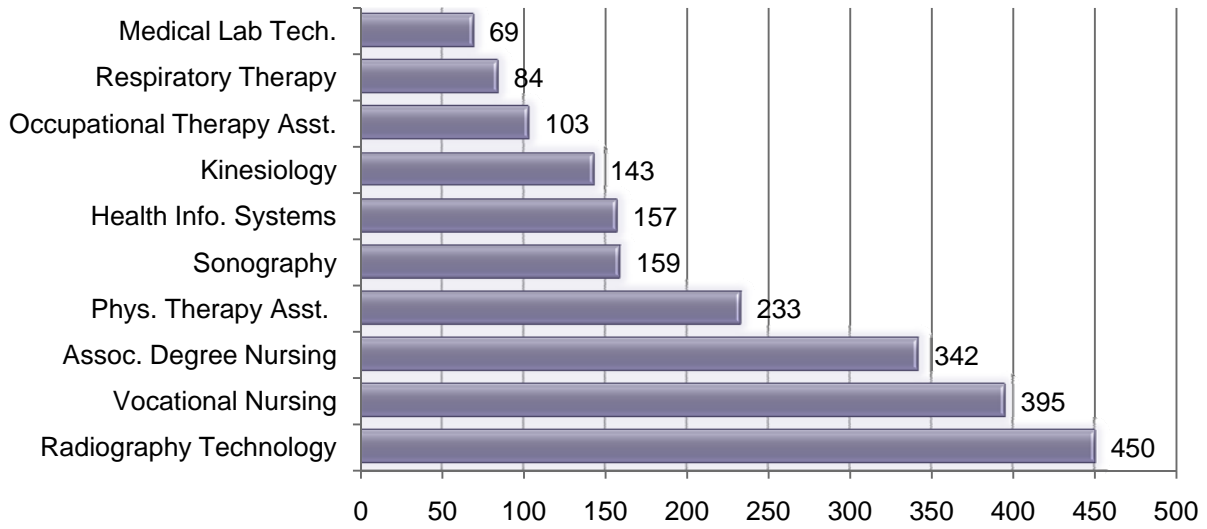


Top 10 Applied Science & Technology Majors Fall 2009



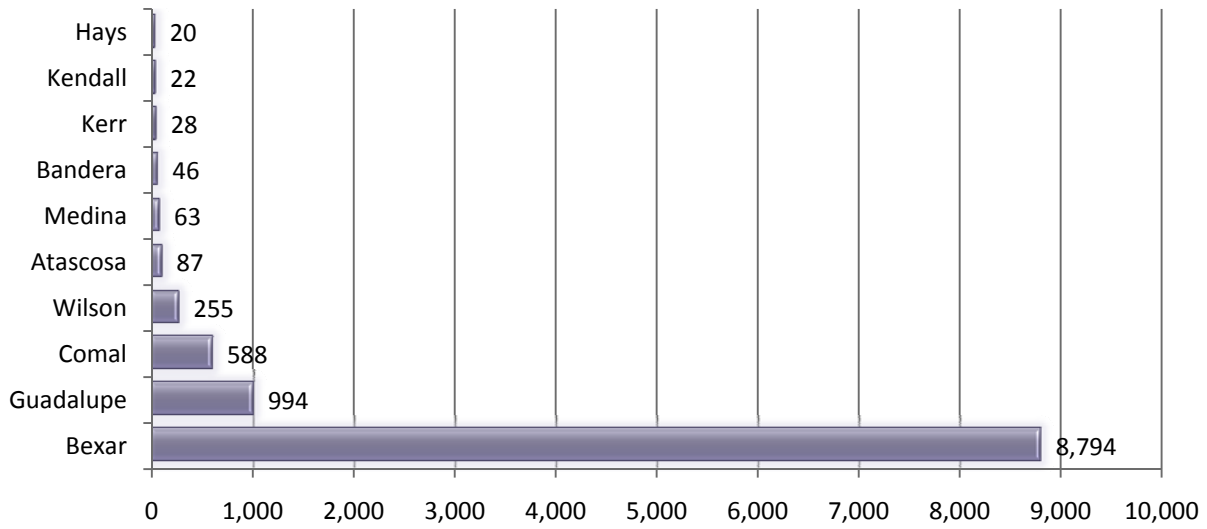
Source: SIS+

Top 10 Health Sciences Majors Fall 2009



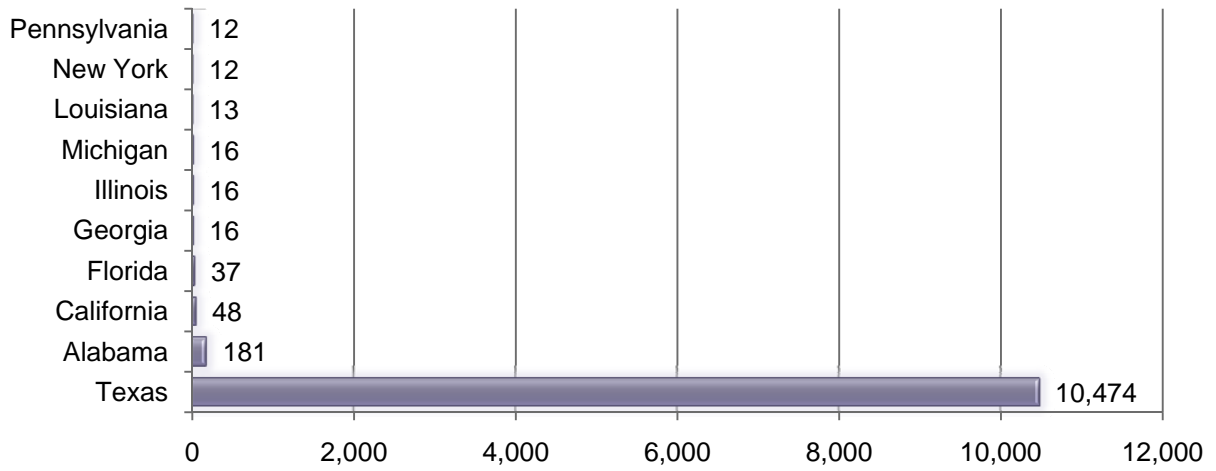
Source: SIS+

Top 10 Counties of Residence Fall 2009



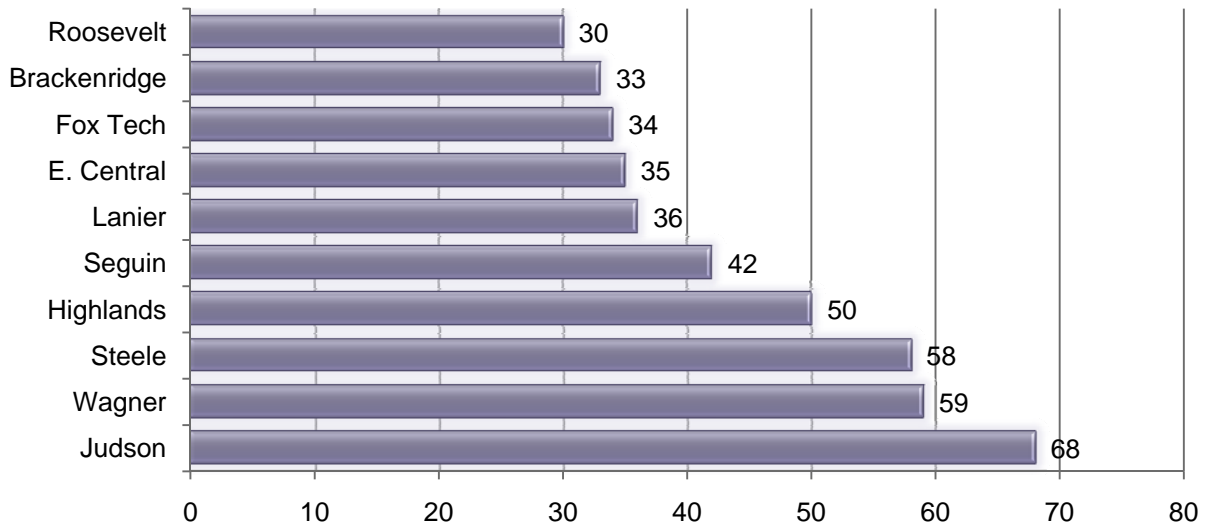
Source: RCA003

Top 10 States of Residence Fall 2009



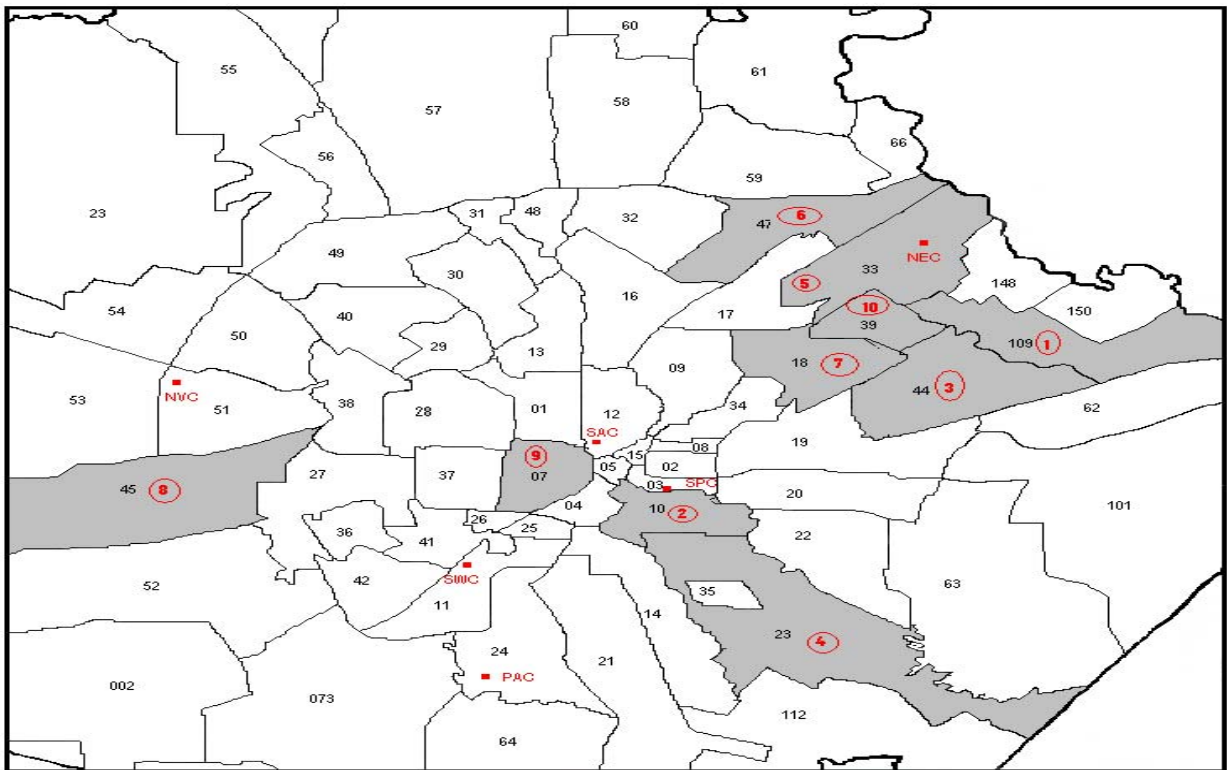
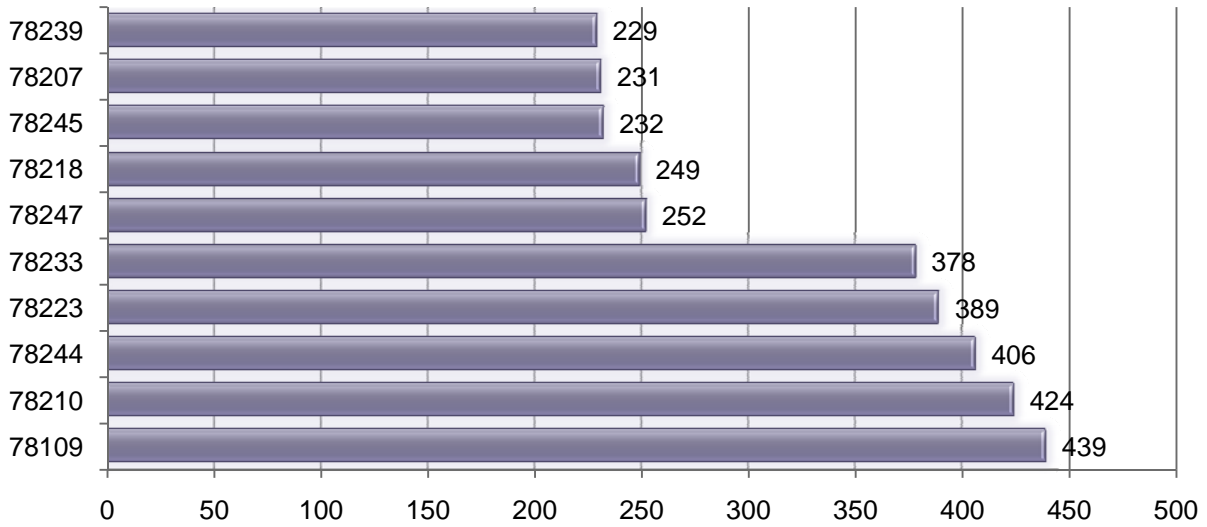
Source: RCA003

Top 10 Feeder High Schools Fall 2009



Reflects High School Graduates Within One Year.

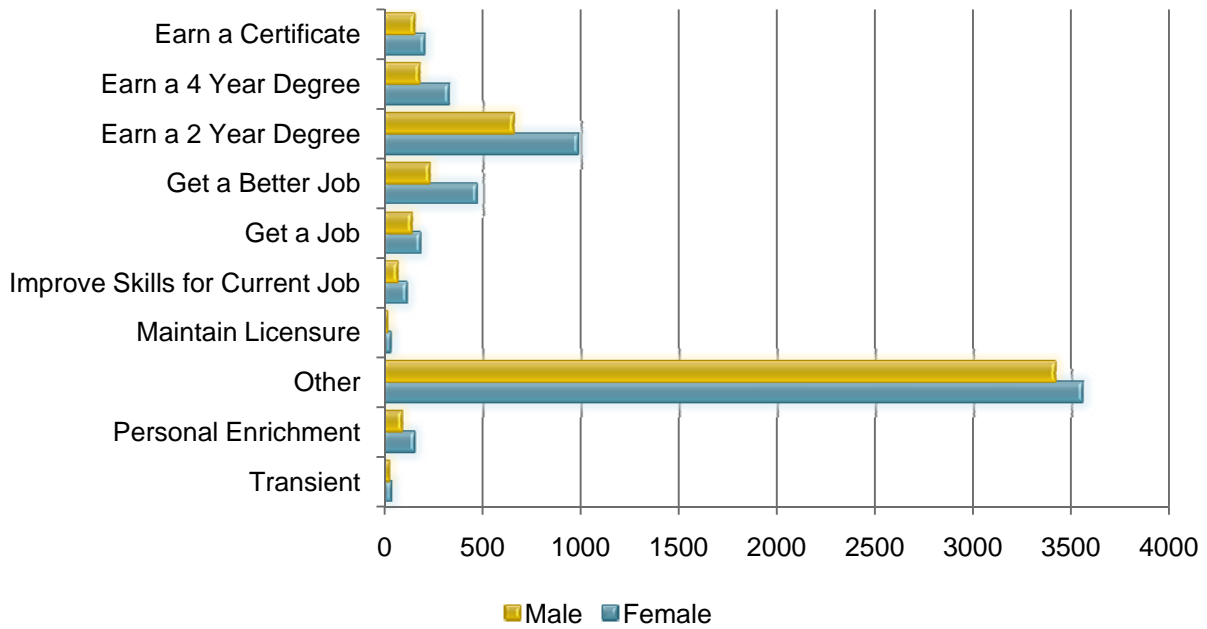
Top 10 Feeder Zip Codes Fall 2009



Source: SIS+; Includes Flex II Students

Student Objective in Attending St. Philip’s College – Fall 2009

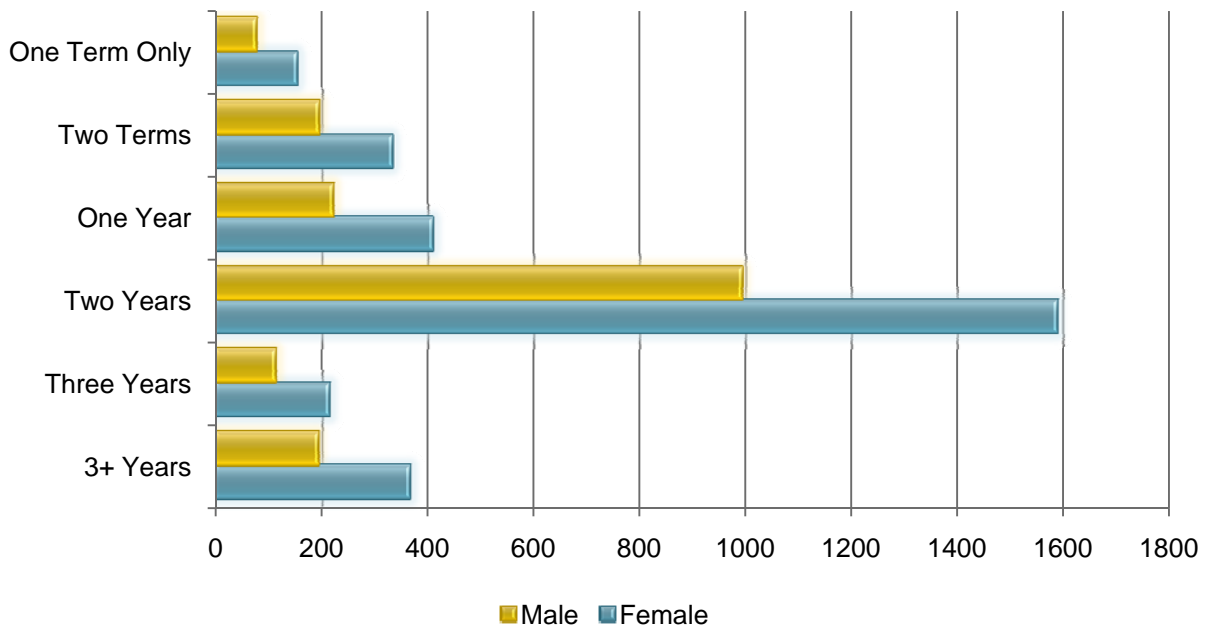
Objective	Female	Male	Total
Earn a Certificate	201	146	347
Earn a 4 Year Degree	325	174	499
Earn a 2 Year Degree	984	654	1,638
Get a Better Job	465	225	690
Get a Job	177	133	310
Improve Skills for Current Job	107	62	169
Maintain Licensure	28	12	40
Other	3,556	3,414	6,970
Personal Enrichment	146	84	230
Transient	31	19	25



Source: AFA020; Student Tracking Survey

Intended Duration of Enrollment – Fall 2009

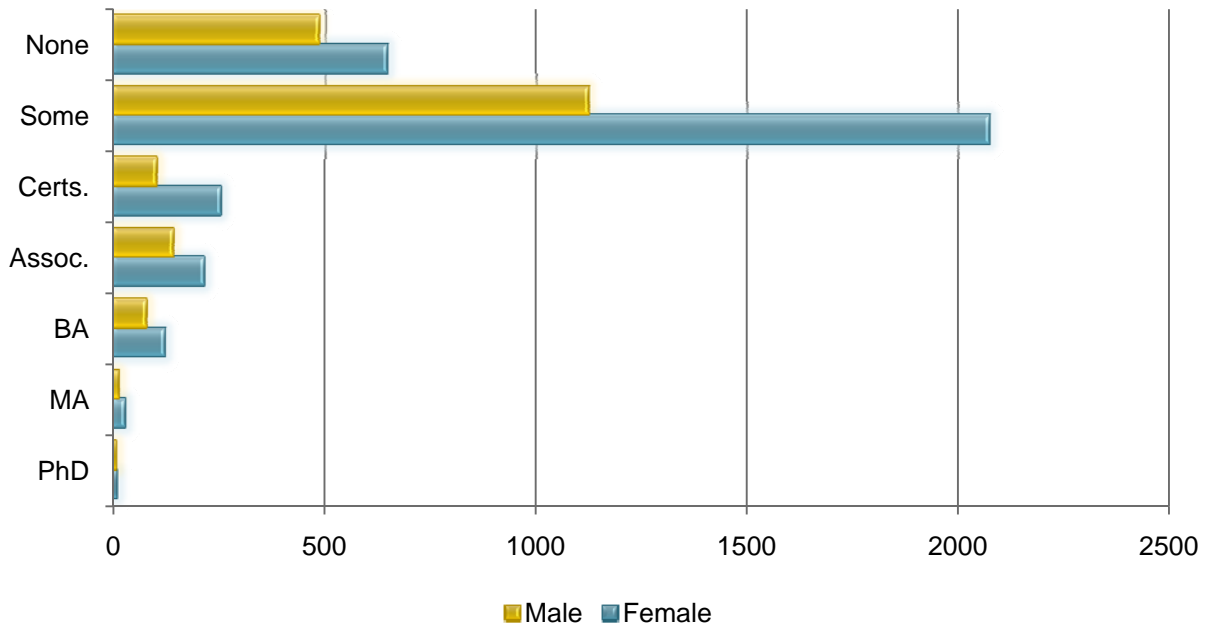
Intended Duration of Enrollment	Female	Male	Total
One Term Only	153	76	229
Two Terms	332	195	527
One Year	409	221	630
Two Years	1,589	994	2,583
Three Years	214	113	327
3+ Years	366	193	559



Source: AFA020; Student Tracking Survey

Academic Experience on Entry – Fall 2009

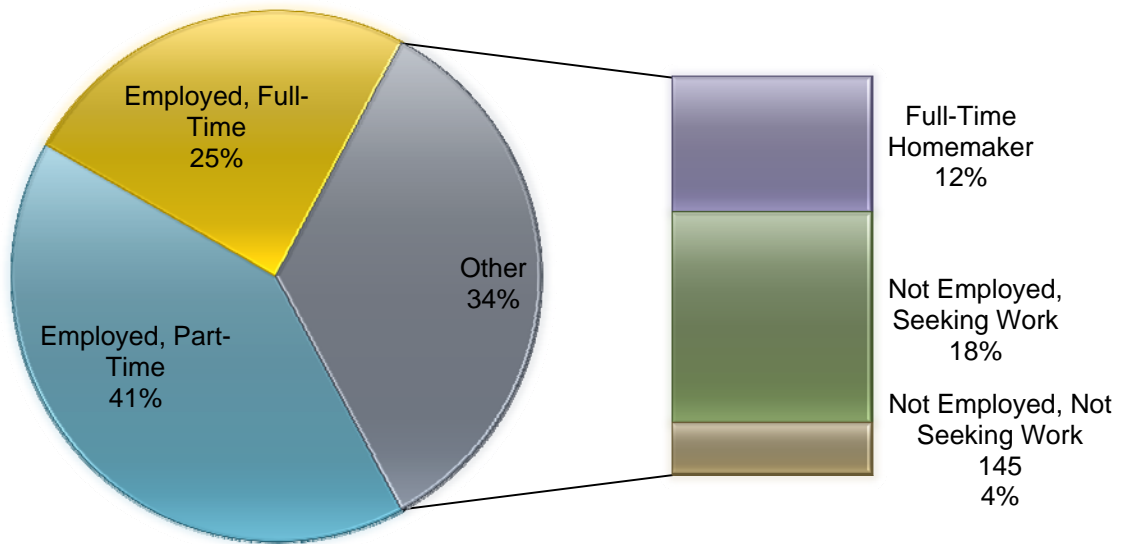
Academic Experience on Entry	Female	Male	Total
None	647	485	1,132
Some College	2,075	1,124	3,199
College Work with Certificate	252	100	352
Associate’s Degree	212	140	352
Bachelor’s Degree	120	76	196
Master’s Degree	26	10	36
Doctorate Degree	6	4	10



Source: AFA020; Student Tracking Survey

Student Employment Status- Fall 2009

Student Employment Status	Female	Male	Total
Employed, Full-Time	1,372	823	2,195
Employed, Part-Time	820	419	1,239
Not Employed, Not Seeking Work	392	192	584
Not Employed, Seeking Work	606	474	1,080
Full-Time Homemaker	145	20	165



Source: AFA020; Student Tracking Survey

Financial Aid Awards, FY 2008-2009

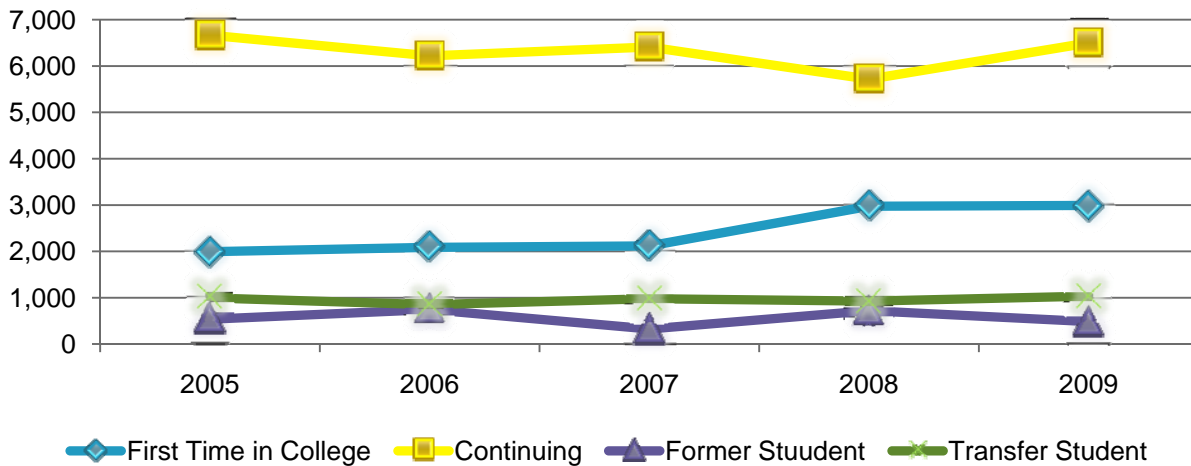
Category	Amount	Number of Awards
Grants	\$18,360,717	8,314
Scholarships	\$738,465	945
Federal Work Study	\$651,780	252
Loans	\$6,708,707	3,357
Waivers	\$62,922	69
Hazelwood	\$738,465	99
Total	\$26,522,591	*12,937

*Total Duplicated Students
Unduplicated Students: 6,731

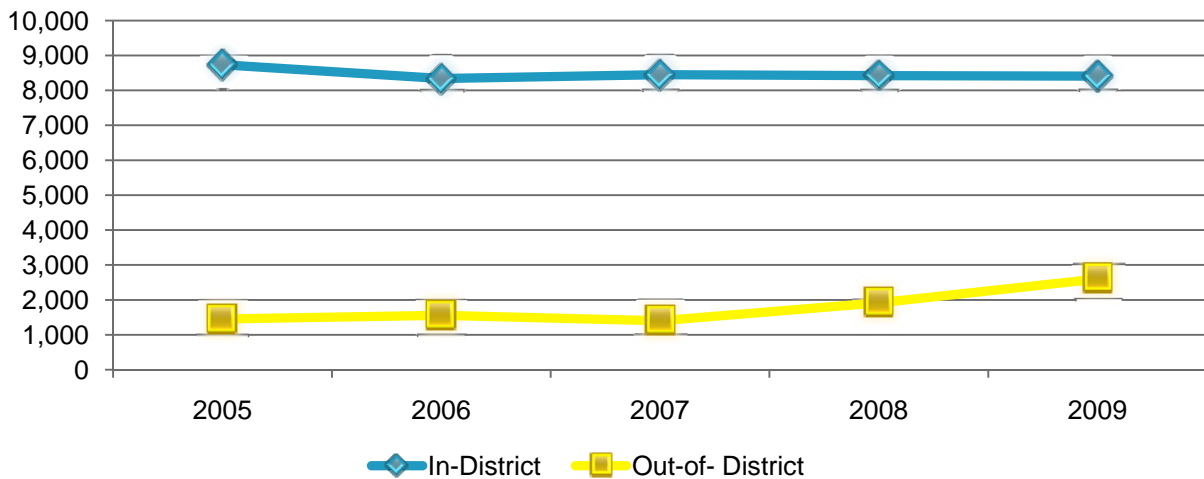
Source: SFA037

Registration – Fall 2004 to Fall 2009

Student Registered as:	2005	2006	2007	2008	2009
First Time in College	1,992	2,086	2,117	2,973	2,991
Continuing	6,665	6,220	6,410	5,715	6,499
Former Student	536	744	327	721	484
Transfer Student	994	849	977	928	1,034



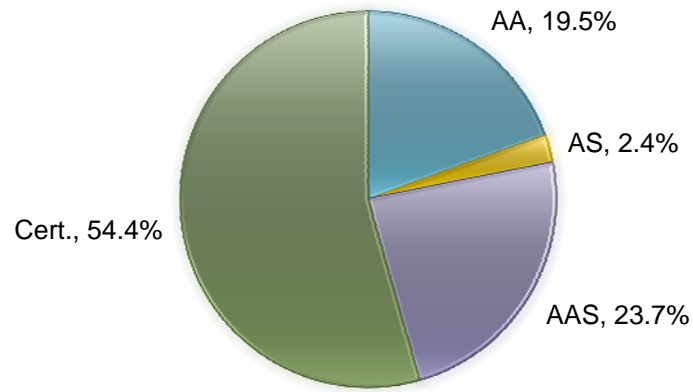
Registration Type:	2005	2006	2007	2008	2009
In-District	8,736	8,342	8,451	8,421	8,408
Out-of-District	1,451	1,557	1,401	1,916	2,600



Source: RCA003

2008-09 Graduation

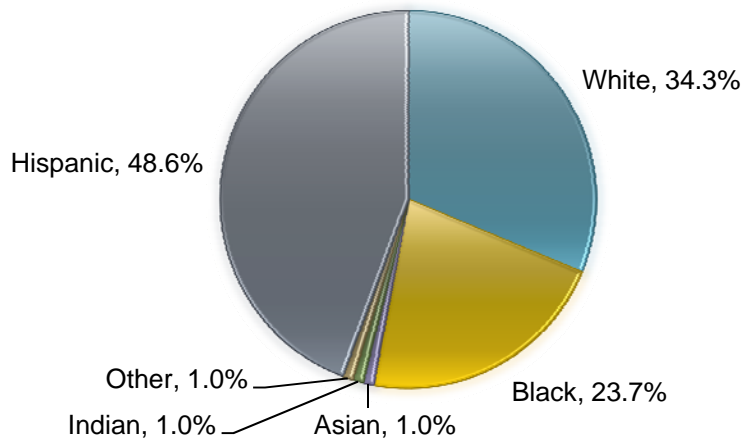
Degrees & Certificates Awarded



Source: CBM009

2008-09 Graduates

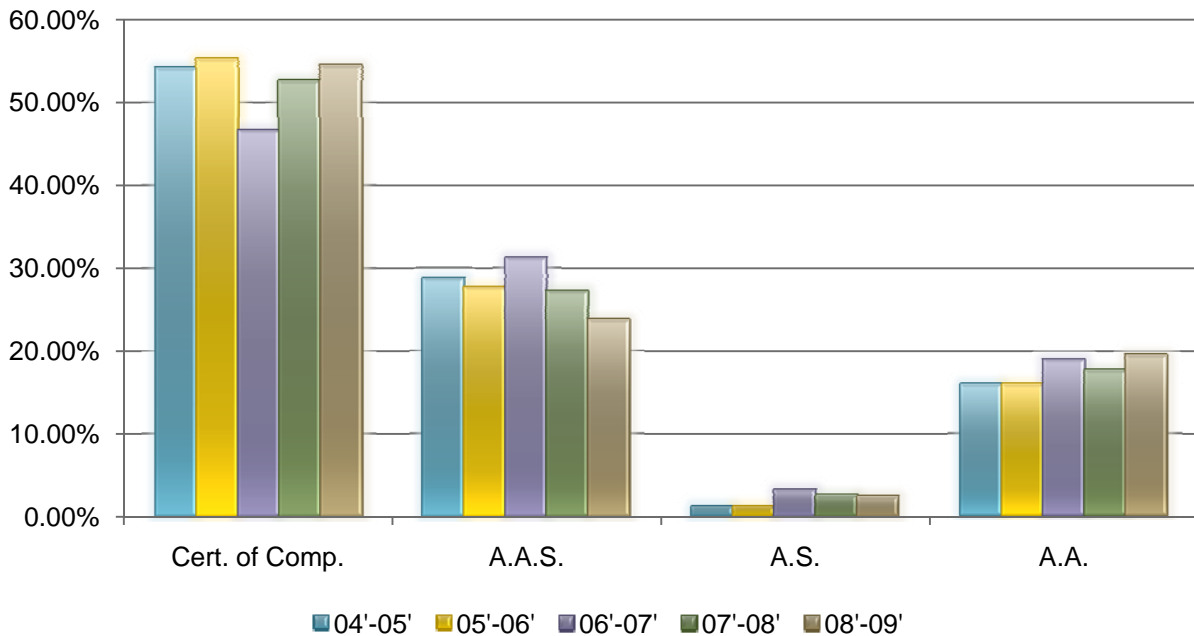
Graduates by Ethnicity



Source: CBM009

Degrees & Certificates Awarded: 2004-05 to 2008-09

	2004-05	2005-06	2006-07	2007-08	2008-09
Totals	1,288	1,432	1,357	1,499	1,284
Degrees & Certificates					
AA	16.0	16.0	19.0	17.7	19.5
AS	1.2	1.2	3.2	2.5	2.4
AAS	28.7	27.6	31.2	27.2	23.7
Cert. of Comp.	54.1	55.2	46.6	52.6	54.4

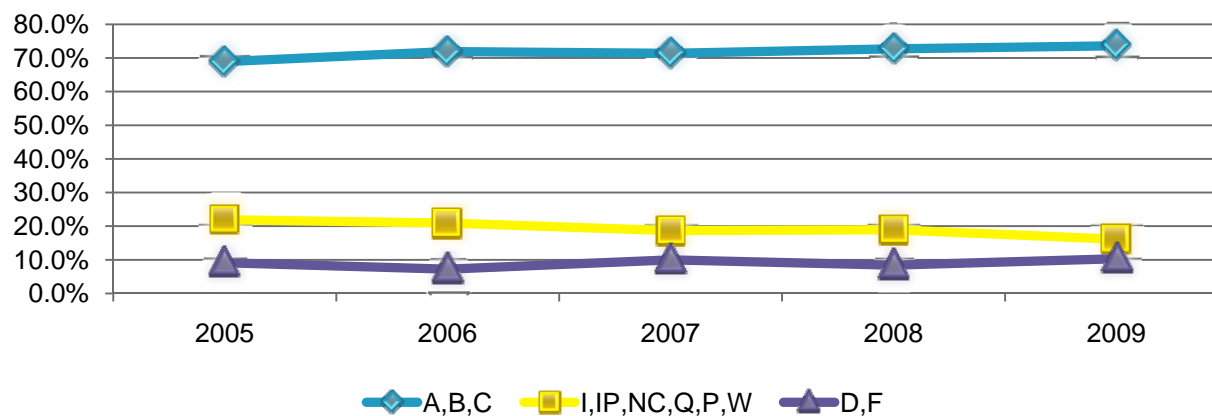


Source: SIS+

Grade Distribution – Fall 2009

FALL	A	B	C	PRODUCTIVE GRADE	D	F	COMPLETION RATE	I	IP	NC	Q	P	W	TOTAL
2005	10,043	7,730	4,444	22,217	885	2,069	25,171	5	1,251	8	0	0	5,820	32,255
	31.1%	24.0%	13.8%	68.9%	2.7%	6.4%	78.0%	0.0%	3.9%	0.0%	0.0%	0.0%	18.0%	100.0%
2006	10,495	7,769	4,382	22,646	807	1,473	24,926	382	1,015	30	1	0	5,143	31,497
	33.3%	24.7%	13.9%	71.9%	2.6%	4.7%	79.1%	1.2%	3.2%	0.1%	0.0%	0.0%	16.3%	100.0%
2007	9,759	7,609	4,408	21,776	817	2,215	24,808	0	1,291	18	0	0	4,388	30,505
	32.9%	25.5%	14.5%	71.4%	2.7%	7.3%	81.3%	0.0%	4.2%	0.0%	0.0%	0.0%	14.4%	100.0%
2008	10,133	7,717	4,493	22,343	809	1,767	24,919	407	1,089	11	5	0	4,307	30,738
	33.6%	25.1%	15.2%	72.7%	2.6%	5.7%	81.1%	1.3%	3.5%	0.0%	0.0%	0.0%	14%	100.0%
2009	11,636	8,493	4,779	24,908	1,054	2,432	28,394	24	1,119	6	6	0	4,312	33,861
	34.4%	25.1%	14.1%	73.6%	3.1%	7.2%	83.9%	0.0%	3.3%	0.0%	0.0%	0.0%	12.7%	100.0%

Source: RFA696



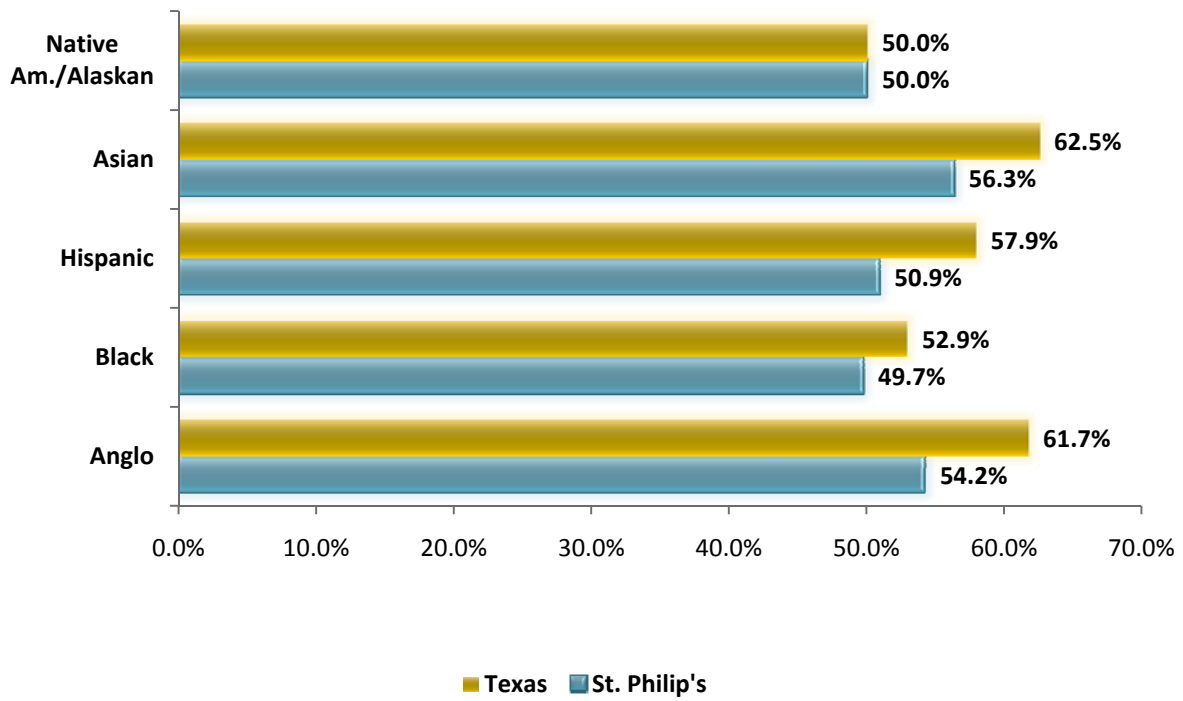
Fall to Fall Retention

% of SPC Students Who Reenrolled at SPC the Next Fall (Non-Graduates)	2004-05	2005-06	2006-07	2007-08	2008-09
Anglo	39.4%	41.0%	43.6%	41.0%	39.1%
Black	42.6%	41.7%	42.7%	41.0%	40.7%
Hispanic	44.6%	43.5%	46.1%	44.3%	43.8%
Asian	48.1%	46.0%	47.0%	44.9%	46.0%
Native American/ Alaskan	48.7%	32.2%	31.7%	40.0%	36.4%
Non-Resident	37.5%	53.8%	60.0%	30.0%	57.9%
Total AC- SPC	42.7%	42.4%	44.6%	42.6%	41.8%
Total Texas	42.3%	41.9%	42.2%	42.4%	44.0%
% of Students Not Found in Any State College the Next Fall (Non-Graduates)	2004-05	2005-06	2006-07	2007-08	2008-09
Anglo	46.2%	43.0%	42.2%	39.5%	37.5%
Black	49.8%	47.9%	46.8%	48.5%	46.9%
Hispanic	45.8%	46.2%	44.7%	44.2%	42.1%
Asian	43.1%	41.5%	39.9%	41.6%	39.4%
Native American/ Alaskan	46.2%	49.2%	58.5%	48.6%	50.0%
Non-Resident	62.5%	23.1%	30.0%	60.0%	42.1%
Total AC- SPC	46.6%	45.3%	44.2%	43.3%	41.3%
Total Texas	40.7%	40.8%	40.1%	40.0%	38.3%

Source: THECB; transfer to private or out-of-state institutions not considered.

Retention of First-Time* Degree-Seeking Freshman by Ethnicity – Fall 2008

St. Philip's vs. Texas Retention



*A student who is enrolled in 12 or more credit hours.
 Source: THECB (non-degree seeking students not considered)

**STUDENT RETENTION BY DEPARTMENT AND SELF-DECLARED MAJOR
2009-2010**

Division, Department, Major	Fall Enrollment	Fall Completion	Fall Within Semester Retention Rate	Students Completing Fall and Enrolled Spring	Fall to Spring Retention Rate	Students Completing Spring Semester	Spring Within Semester Retention Rate	Continuous Enrollment Fall to End of Spring
APPLIED SCIENCE & TECHNOLOGY								
ALLIED CONSTRUCTION								
Air Conditioning	173	172	99.4	134	77.9	134	100.0	77.5
Drafting	100	93	93.0	71	76.3	69	97.2	69.0
Electrical Trades	154	144	93.5	104	72.2	101	97.1	65.6
Home Building	77	71	92.2	49	69.0	48	98	62.3
Plumbing	22	21	95.5	17	81.0	17	100.0	77.3
<i>Total Allied Construction</i>	<i>526</i>	<i>501</i>	<i>95.2</i>	<i>375</i>	<i>74.9</i>	<i>369</i>	<i>98.4</i>	<i>70.2</i>
AUTOMOTIVE TECHNOLOGY								
Automotive Service Education Program	9	9	100.0	6	66.7	6	100.0	66.7
Automotive Technology	475	455	95.8	305	67.7	299	98.0	62.9
<i>Total Automotive Technology</i>	<i>484</i>	<i>464</i>	<i>95.9</i>	<i>311</i>	<i>67.0</i>	<i>305</i>	<i>98.1</i>	<i>63.0</i>
MULTI-MODAL TRANSPORTATION TECH.								
Aircraft Technology	260	257	98.8	204	79.4	97	97.5	76.5
Diesel Technology	122	120	98.4	95	79.2	51	97.9	76.2
Railroad Technology	1	1	100.0	1	100.0	76	100.0	100.0
<i>Total Multi-Modal Transportation Tech.</i>	<i>383</i>	<i>378</i>	<i>98.7</i>	<i>300</i>	<i>79.4</i>	<i>224</i>	<i>97.7</i>	<i>76.5</i>

**STUDENT RETENTION BY DEPARTMENT AND SELF-DECLARED MAJOR
2009-2010
(Continued)**

Division, Department, Major	Fall Enrollment	Fall Completion	Fall Within Semester Retention Rate	Students Completing Fall, Enrolled Spring	Fall to Spring Retention Rate	Students Completing Spring Semester	Spring Within Semester Retention Rate	Continuous Enrollment Fall to End of Spring
BUSINESS INFORMATION SOLUTIONS								
Accounting Information Solutions Tech.	89	85	95.5	64	75.3	64	100.0	71.9
Administrative Computer Technician	149	139	93.3	102	73.4	101	99.0	67.8
Business Administration	401	387	96.5	223	57.6	212	95.1	52.9
Business Management	165	156	94.5	108	69.2	104	96.3	63.0
Computer Science	73	69	94.5	46	66.7	45	97.8	61.6
Information Technology	44	43	97.7	34	79.1	33	97.1	75.0
<i>Total Business Information Solutions</i>	<i>921</i>	<i>879</i>	<i>95.4</i>	<i>577</i>	<i>65.6</i>	<i>559</i>	<i>96.9</i>	<i>60.7</i>
TOURISM, HOSPITALITY & CULINARY ARTS								
Baking & Pastry Arts	82	80	97.6	66	82.5	65	98.5	79.3
Culinary Arts	451	443	98.2	327	73.8	316	96.6	70.1
Hotel Operations	44	43	97.7	38	88.4	36	94.7	81.8
Restaurant Operations	26	25	96.2	18	72.0	17	94.4	65.4
Tourism	24	22	91.7	18	81.8	16	88.9	66.7
<i>Total Tourism, Hospitality & Culinary Arts</i>	<i>24</i>	<i>613</i>	<i>97.8</i>	<i>467</i>	<i>76.2</i>	<i>450</i>	<i>96.4</i>	<i>71.8</i>

**STUDENT RETENTION BY DEPARTMENT AND SELF-DECLARED MAJOR
2009-2010
(Continued)**

Division, Department, Major	Fall Enrollment	Fall Completion	Fall Within Semester Retention Rate	Students Completing Fall and Enrolled Spring	Fall to Spring Retention Rate	Students Completing Spring Semester	Spring Within Semester Retention Rate	Continuous Enrollment Fall to End of Spring
ELECTRONICS & INFO. TECHNOLOGY								
Bio-Medical Equipment Technology	55	52	94.5	45	86.5	44	97.8	80.0
Communications Equipment Technology	1	1	100.0	1	100.0	1	100.0	100.0
Computer Maintenance Technology	161	155	96.3	123	79.4	119	96.7	73.9
Electronics	1	1	100.0	0	0.0	0	0.0	0.0
Information Technology	131	124	94.7	84	67.7	82	97.6	62.6
Power Generation & Alternative Energy	15	15	100.0	13	86.7	13	100.0	86.7
<i>Total Electronic & Info. Technology</i>	<i>364</i>	<i>348</i>	<i>95.6</i>	<i>266</i>	<i>76.4</i>	<i>259</i>	<i>97.4</i>	<i>71.2</i>
REPAIR & MANUFACTURING TECH.								
Auto Body Repair	142	134	94.4	97	72.4	90	92.8	63.4
Manufacturing Engineering Technology	80	67	83.7	51	76.1	46	90.2	57.5
Welding	101	100	99.0	76	76.0	72	94.7	71.3
<i>Total Repair & Manufacturing Technology</i>	<i>323</i>	<i>301</i>	<i>93.2</i>	<i>224</i>	<i>74.4</i>	<i>208</i>	<i>92.9</i>	<i>64.4</i>
COUNSELING								
General	87	84	96.6	64	76.2	60	93.8	69.0
<i>Total Counseling</i>	<i>87</i>	<i>84</i>	<i>96.6</i>	<i>64</i>	<i>76.2</i>	<i>60</i>	<i>93.8</i>	<i>69.0</i>
<i>TOTAL APPLIED SCIENCE & TECHNOLOGY</i>	<i>3,715</i>	<i>3,568</i>	<i>96.0</i>	<i>2,584</i>	<i>72.4</i>	<i>2,584</i>	<i>2,503</i>	<i>67.4</i>

STUDENT RETENTION BY DEPARTMENT AND SELF-DECLARED MAJOR
2009-2010
(Continued)

Division, Department, Major	Fall Enrollment	Fall Completion	Fall Within Semester Retention Rate	Students Completing Fall and Enrolled Spring	Fall to Spring Retention Rate	Students Completing Spring Semester	Spring Within Semester Retention Rate	Continuous Enrollment Fall to End of Spring
ARTS & SCIENCES								
BEHAVIORAL SCIENCES								
Criminal Justice	173	161	93.1	106	65.8	102	96.2	59.0
Philosophy	5	5	100.0	4	80.0	4	100.0	80.0
Psychology	165	158	95.8	90	57.0	87	96.7	52.7
Sociology	107	101	94.4	64	63.4	61	95.3	57.0
<i>Total Behavioral Sciences</i>	<i>450</i>	<i>425</i>	<i>94.4</i>	<i>264</i>	<i>62.1</i>	<i>254</i>	<i>96.2</i>	<i>56.4</i>
COUNSELING								
General	7	6	85.7	5	83.3	5	100.0	71.4
Liberal Arts	2,731	2,630	96.3	1,980	75.3	1,941	98.0	71.1
<i>Total Counseling</i>	<i>2,738</i>	<i>2,636</i>	<i>96.3</i>	<i>1,985</i>	<i>75.3</i>	<i>1,946</i>	<i>98.0</i>	<i>71.1</i>
COMMUNICATIONS & LEARNING								
Education	392	380	96.9	249	65.5	380	96.0	61.0
English	43	42	97.7	26	61.9	42	100.0	60.5
Foreign Languages	12	12	100.0	9	75.0	12	100.0	75.0
Speech	18	15	83.3	12	80.0	15	100.0	66.7
<i>Total Communications & Learning</i>	<i>465</i>	<i>449</i>	<i>96.6</i>	<i>296</i>	<i>65.9</i>	<i>449</i>	<i>96.6</i>	<i>61.5</i>

**STUDENT RETENTION BY DEPARTMENT AND SELF-DECLARED MAJOR
2009-2010
(Continued)**

Division, Department, Major	Fall Enrollment	Fall Completion	Fall Within Semester Retention Rate	Students Completing Fall and Enrolled Spring	Fall to Spring Retention Rate	Students Completing Spring Semester	Spring Within Semester Retention Rate	Continuous Enrollment Fall to End of Spring
SOCIAL SCIENCES								
Economics	20	17	85.0	9	52.9	9	100.00	45.0
Government	12	12	100.0	10	83.3	10	100.0	83.3
History	32	30	93.8	14	46.7	14	100.0	43.8
Humanities	2	2	100.0	1	50.0	1	100.0	50.0
Pre-Law	33	31	93.9	17	54.8	17	100.0	51.5
<i>Total Social Sciences</i>	<i>99</i>	<i>92</i>	<i>92.9</i>	<i>51</i>	<i>55.4</i>	<i>51</i>	<i>100.0</i>	<i>51.5</i>
FINE ARTS								
Art	95	92	96.8	57	62.0	57	100.0	60.0
Drama	22	21	95.5	16	76.2	15	93.8	68.2
Music	69	68	98.6	48	70.6	48	100.0	69.6
<i>Total Fine Arts</i>	<i>186</i>	<i>181</i>	<i>97.3</i>	<i>121</i>	<i>66.9</i>	<i>120</i>	<i>99.2</i>	<i>64.5</i>
NATURAL SCIENCES								
Biology	1,242	1,186	95.5	736	62.1	712	96.7	57.3
Chemistry	21	20	95.2	15	75.0	15	100.0	71.4
Geology	2	2	100.0	1	50.0	0	0.0	0.0
Physics	1	1	100.0	0	0.0	0	0.0	0.0
<i>Total Natural Sciences</i>	<i>1,266</i>	<i>1,209</i>	<i>95.5</i>	<i>752</i>	<i>62.2</i>	<i>727</i>	<i>96.7</i>	<i>57.4</i>

**STUDENT RETENTION BY DEPARTMENT AND SELF-DECLARED MAJOR
2009-2010
(Continued)**

Division, Department, Major	Fall Enrollment	Fall Completion	Fall Within Semester Retention Rate	Students Completing Fall and Enrolled Spring	Fall to Spring Retention Rate	Students Completing Spring Semester	Spring Within Semester Retention Rate	Continuous Enrollment Fall to End of Spring
MATHEMATICS								
Mathematics	111	104	93.7	69	66.3	66	95.7	59.5
<i>Total Mathematics</i>	<i>111</i>	<i>104</i>	<i>93.7</i>	<i>69</i>	<i>66.3</i>	<i>66</i>	<i>95.7</i>	<i>59.5</i>
TOTAL ARTS & SCIENCES	5,315	5,096	95.9	3,538	69.4	3,450	97.5	64.9
HEALTH SCIENCES								
EARLY CHILDHOOD, PHYSICAL HEALTH & CLINICAL SUPPORT SERVICES								
Early Childhood & Family Services	149	142	95.3	108	76.1	104	96.3	69.8
Health Information Systems	157	146	93.0	109	74.7	106	97.2	67.5
Kinesiology	141	135	95.7	79	58.5	73	92.4	51.8
Occupational Therapy Assistant	103	99	96.1	80	80.8	77	96.2	74.8
Physical Therapy Assistant	234	220	94.0	157	71.4	153	97.5	65.4
<i>Total Early Childhood, Physical Health & Clinical Support Services</i>	<i>784</i>	<i>742</i>	<i>94.6</i>	<i>533</i>	<i>71.8</i>	<i>513</i>	<i>96.2</i>	<i>65.4</i>
ASSOCIATE DEGREE IN NURSING								
Associate Degree Nursing	343	331	96.5	192	58.0	182	94.8	53.1
<i>Total Associate Degree Nursing</i>	<i>343</i>	<i>331</i>	<i>96.5</i>	<i>192</i>	<i>58.0</i>	<i>182</i>	<i>94.8</i>	<i>53.1</i>
VOCATIONAL NURSING								
Vocational Nursing	394	385	97.7	281	73.0	271	96.4	68.8
<i>Total Vocational Nursing</i>	<i>394</i>	<i>385</i>	<i>97.7</i>	<i>281</i>	<i>73.0</i>	<i>271</i>	<i>96.4</i>	<i>68.8</i>

**STUDENT RETENTION BY DEPARTMENT AND SELF-DECLARED MAJOR
2009-2010
(Continued)**

Division, Department, Major	Fall Enrollment	Fall Completion	Fall Within Semester Retention Rate	Students Completing Fall and Enrolled Spring	Fall to Spring Retention Rate	Students Completing Spring Semester	Spring Within Semester Retention Rate	Continuous Enrollment Fall to End of Spring
DIAGNOSTIC & INVASIVE HEALTH SCIENCES								
Histological Technology	15	13	86.7	10	76.9	10	100.0	66.7
Invasive Cardiovascular Technology	19	18	94.7	17	94.4	17	100.0	89.5
Medical Lab Technician	69	63	91.3	37	58.7	35	94.6	50.7
Radiography Technology	451	438	97.1	340	77.6	326	95.9	72.3
Respiratory Therapy	84	79	94.0	69	87.3	66	95.7	78.6
Sonography	159	156	98.1	124	79.5	119	96.0	74.8
Surgical Technologist	53	51	96.2	43	84.3	42	97.7	79.2
<i>Total Diagnostic & Invasive Health Sciences</i>	850	818	96.2	640	78.2	615	96.1	72.4
TOTAL HEALTH SCIENCES	2,371	2,276	96.0	1,646	72.3	513	96.1	66.7
NON-SPECIFIC								
COUNSELING								
Non-Degree Seeking	55	54	98.2	34	63.0	34	100.0	61.8
Non-Specific	174	168	96.6	89	53.0	88	98.9	50.6
<i>Total Counseling</i>	229	222	96.9	123	55.4	122	99.2	53.3
TOTAL NON-SPECIFIC	229	222	96.9	123	55.4	122	99.2	53.3
TOTAL	11,630	11,162	96.0	7,891	70.7	7,656	97.0	65.8

Source: SIS+

PERSONNEL PROFILE

Employee Profile

Full Time Employment by Gender & Classification..... 71

Full Time Employment by Ethnicity & Classification..... 71

Faculty Profile

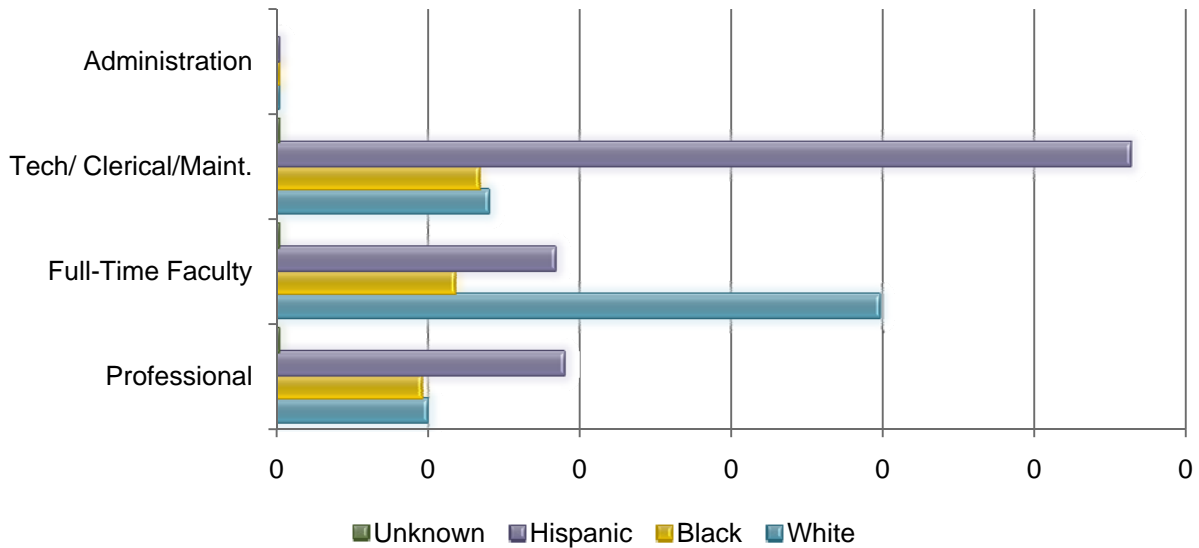
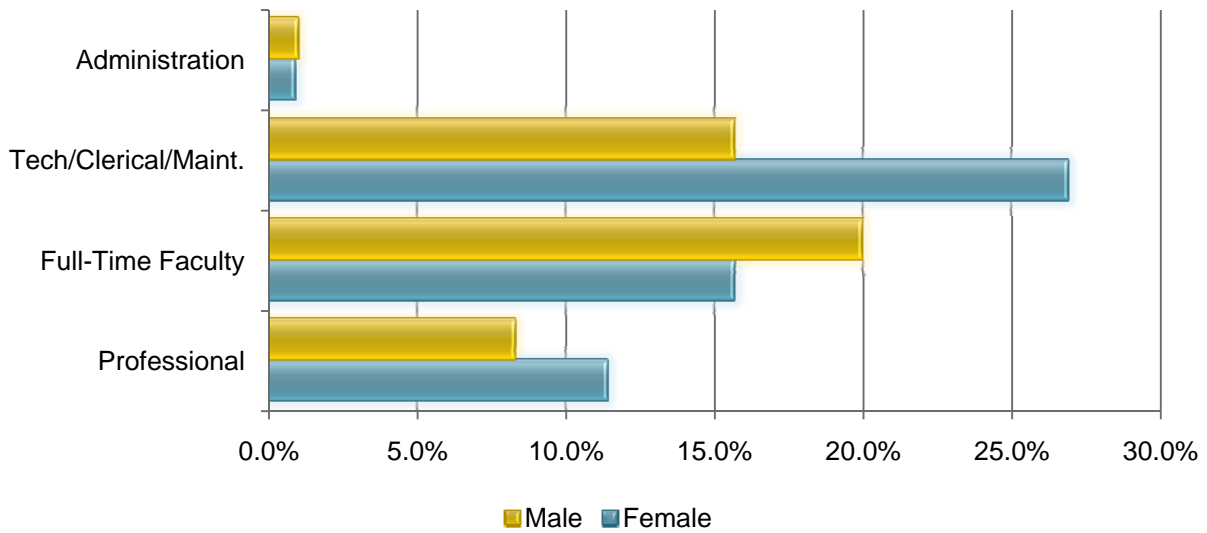
Gender, Ethnicity, Faculty Rank, Highest Degree Earned..... 72

By Division 73

By Department 73

Employee Profile - Fall 2009

Full-Time Employees	Female	Male	White	Black	Hispanic	Unknown/Misc.
Administration	5	6	4	5	2	0
Tech/Clerical/Maintenance	156	91	40	39	164	4
Full-Time Faculty	91	116	115	34	53	5
Professional	66	48	29	28	55	2
Total	318	261	188	106	274	11

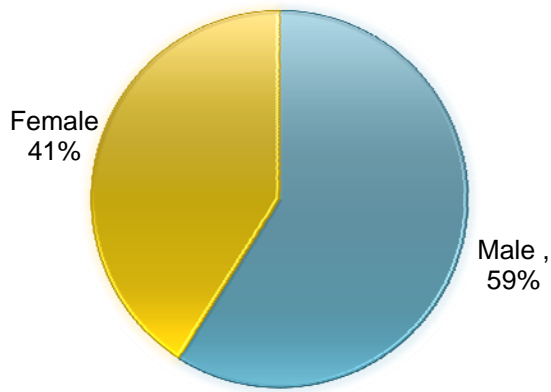


Source: SIS+

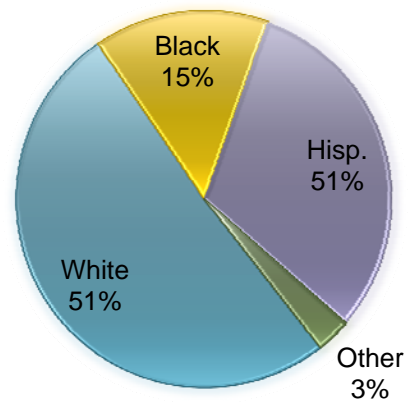
Faculty Profile – Fall 2009

Total Faculty: 584

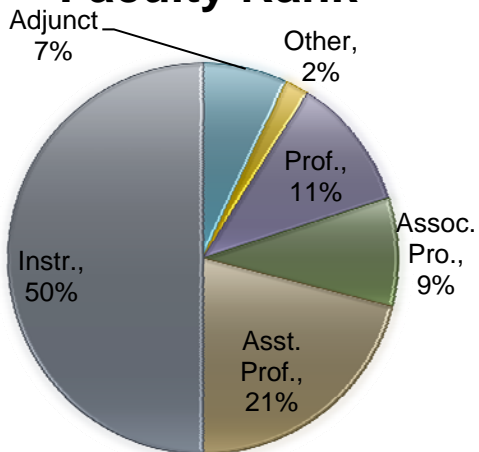
Gender



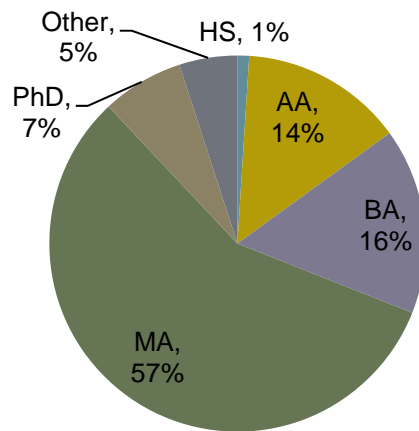
Ethnicity



Faculty Rank



Degree Level



Includes Full-Time, Temporary and Adjunct Faculty

Source: SIS+

Faculty by Division/Department – Fall 2009

Division	Full-Time	Full-Time Temp.	Adjunct	Total
Arts & Science	76	2	152	230
Applied Science	63	11	98	172
Health Science	54	8	48	110
Other	14	0	17	31
Total	207	21	315	543

Department	Full-Time	Full-Time Temp.	Adjunct	Total
Allied Construction	10	1	30	40
Automotive Technology	10	0	11	21
Business Information Solutions	7	0	12	19
Electronic & Information Technology	11	3	7	21
Multi-Modal Transportation	11	3	13	27
Repair and Manufacturing Tech.	6	3	16	25
Tourism, Hospitality & Culinary Arts	8	1	9	17
Health Sciences	27	0	29	56
Nursing Education	22	8	9	36
Early Childhood/Phys. Health	5	0	10	13
Communications & Learning	22	0	34	56
Fine Arts	5	0	20	25
Mathematics	16	0	35	50
Natural Sciences	13	2	35	49
Social Sciences	15	0	19	33
Behavioral Sciences	5	0	9	14
Counseling & Guidance	4	0	16	20
Learning Resources	10	0	1	11

Full-Time to Part-Time Ratio : 51.49

Faculty to Student Ratio : 1:22

Counselor to Student Ratio : 1 : 1,835

Source: SIS+

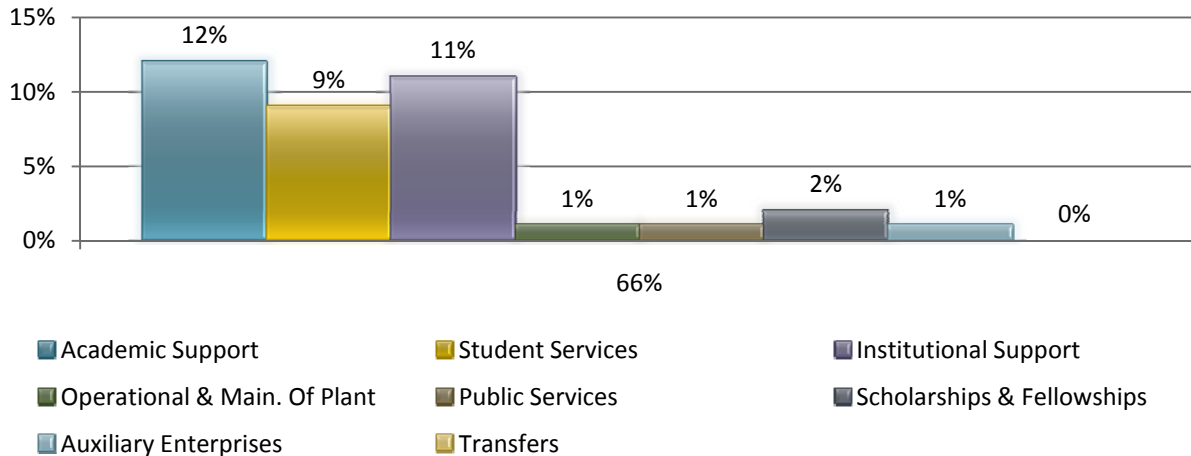
FINANCIAL PROFILE

Tuition and Fees 69
Budget, FY 2008-2009 70

Texas Residents FY 2009-10						
In District				Out-of-District		
Semester Hours Taken	Tuition	PT	SA	Tuition	PT	SA
1-6	\$321.00	\$122	\$1-6	\$621.00	\$122	\$1-6
7	\$374.50	\$127	\$7	\$724.50	\$127	\$7
8	\$428.00	\$127	\$8	\$828.00	\$127	\$8
9	\$481.50	\$127	\$9	\$931.50	\$127	\$9
10	\$535.00	\$127	\$10	\$1,035.00	\$127	\$10
11	\$588.50	\$127	\$11	\$1,138.50	\$127	\$11
12	\$642.00	\$127	\$12	\$1,242.00	\$127	\$12
13	\$695.50	\$127	\$13	\$1,345.50	\$127	\$13
14	\$749.00	\$127	\$14	\$1,449.00	\$127	\$14
15	\$802.50	\$127	\$15	\$1,552.50	\$127	\$15
16	\$856.00	\$127	\$16	\$1,656.00	\$127	\$16
17	\$909.50	\$127	\$17	\$1,759.50	\$127	\$17
18	\$963.00	\$127	\$18	\$1,863.00	\$127	\$18
19	\$1,016.50	\$127	\$19	\$1,966.50	\$127	\$19
20	\$1,070.00	\$127	\$20	\$2,070.00	\$127	\$20
21	\$1,123.50	\$127	\$21	\$2,173.50	\$127	\$21
Out of State				International		
Semester Hours Taken	Tuition	PT	SA	Tuition	PT	SA
1-6	\$1218.00	\$122	\$1-6	\$3,500	\$122	\$1-6
7	\$1421.00	\$127	\$7	\$3,500	\$127	\$7
8	\$1624.00	\$127	\$8	\$3,500	\$127	\$8
9	\$1827.00	\$127	\$9	\$3,500	\$127	\$9
10	\$2030.00	\$127	\$10	\$3,500	\$127	\$10
11	\$2233.00	\$127	\$11	\$3,500	\$127	\$11
12	\$2436.00	\$127	\$12	\$3,500	\$127	\$12
13	\$2639.00	\$127	\$13	\$3,500	\$127	\$13
14	\$2842.00	\$127	\$14	\$3,500	\$127	\$14
15	\$3045.00	\$127	\$15	\$3,500	\$127	\$15
16	\$3248.00	\$127	\$16	\$3,500	\$127	\$16
17	\$3451.00	\$127	\$17	\$3,500	\$127	\$17
18	\$3654.00	\$127	\$18	\$3,500	\$127	\$18
19	\$3857.00	\$127	\$19	\$3,710	\$127	\$19
20	\$4060.00	\$127	\$20	\$3,920	\$127	\$20
21	\$4263.00	\$127	\$21	\$4,130	\$127	\$21

Budget – FY 2010

St. Philip's College Budget : \$41,277,132



Budgeted Expenses

Total Budget	\$41,277,132
Instructional	27,125,565
Academic Support	4,935,852
Student Services	3,555,989
Institutional Support	4,764,696
Operation & Maintenance of Plant	17,812
Public Service	59,968
Scholarships and Fellowships	666,604
Auxiliary Enterprises	150,656
Transfers	-

Source: SPC FY 2009 Budget